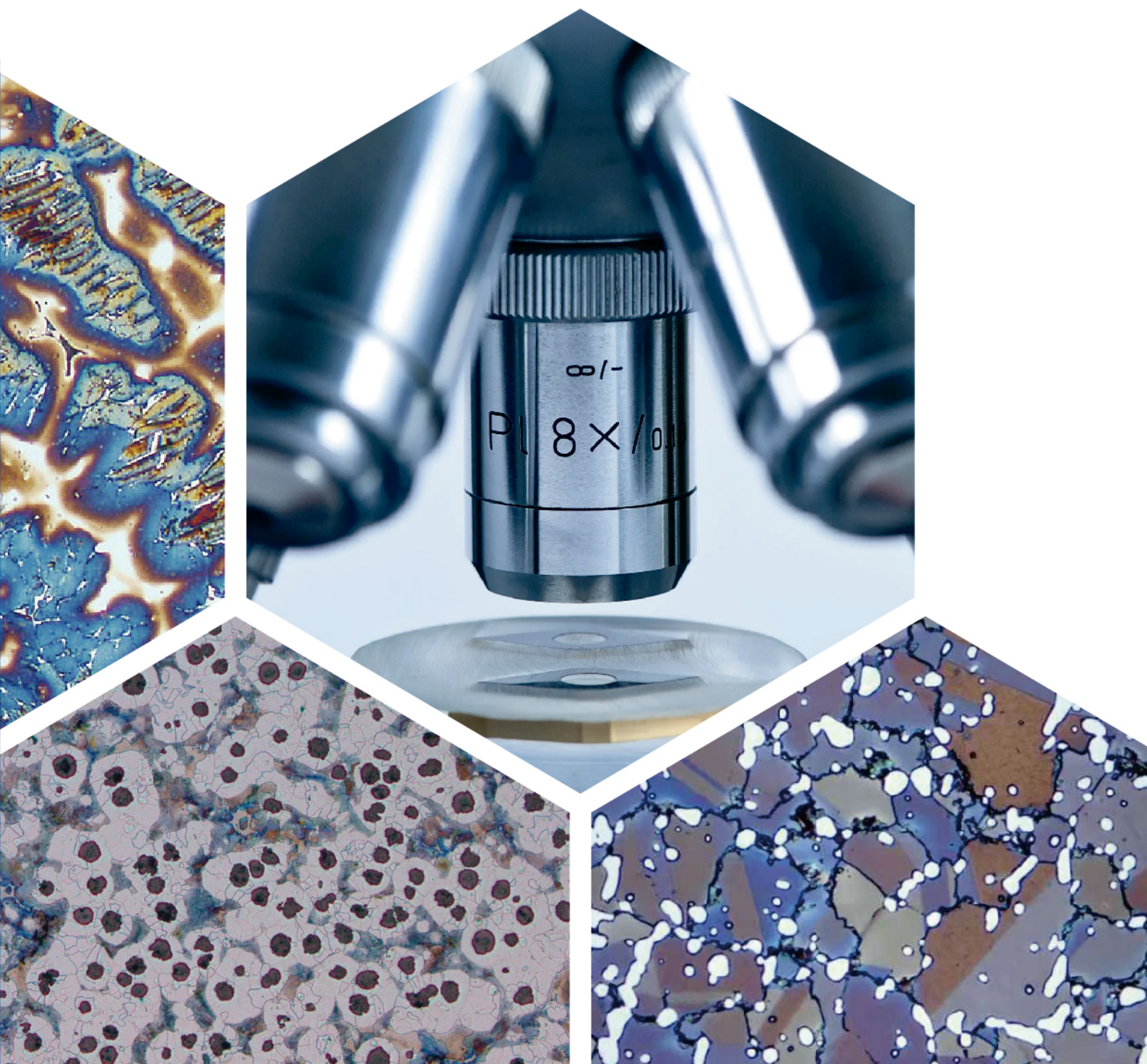


金相耗材解决方案

Metallographic

Consumables Solutions





Your Metallography Partner

海特泰克一是由经验丰富的工程师们在2016年创立。我们的优势是能够与来自美国，欧洲以及本土的世界级优质制造商紧密合作，提供一流的产品给客户。

HT TECH was founded in 2016 by experienced engineers. Our advantage is that we can work closely with world-class quality manufacturers from the United States, Europe and local countries to provide first-class products to customers.



公司主要销售进口金相实验室设备和耗材, 进口防渗涂料, 热电偶, 油&液体过滤系统, 工业炉备件, 耐热合金, 模具润滑&修复剂, 热处理辅助设施等。

The company mainly sells imported metallographic laboratory equipment and consumables, imported stop off paintings, thermocouples, oil & liquid filtration systems, industrial furnace spare parts, heat-resistant alloys, mold lubricants & repair agents, heat treatment auxiliary facilities, etc.

产品目录

CONSUMABLES CATALOG

| | |
|--------------------------------|----|
| ■ 切割片 | 01 |
| ABRASIVE CUT-OFF WHEELS | |
| ■ 金刚石 & CBN切割片 | 04 |
| DIAMOND & CBN CUT OFF WHEELS | |
| ■ 冷却液 | 06 |
| CUTTING LIQUID | |
| ■ 热镶嵌 | 07 |
| HOT MOUNTING | |
| ■ 冷镶嵌 | 09 |
| COLD MOUNTING | |
| ■ 冷镶嵌辅件 | 11 |
| COLD MOUNTING AUXILIARIES | |
| ■ 研磨 | 12 |
| GRINDING | |
| ■ 抛光布 | 20 |
| POLISHING CLOTH | |
| ■ 金刚石悬浮液 | 25 |
| DIAMOND SUSPENSION | |
| ■ 润滑液 & 研磨膏 | 26 |
| LUBRICANTS & DIAMOND PASTE | |
| ■ 抛光剂 & 氧化铝粉 | 27 |
| DIAMOND SPRAY & ALUMINA POWDER | |
| ■ 氧化硅 & 氧化铝悬浮液 | 28 |
| SILICA & ALUMINA SUSPENSION | |

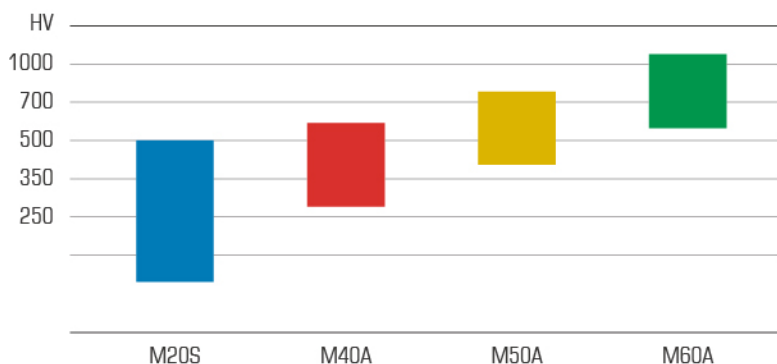
Cut-off Wheels Series M

M系列切割片

M系列切割片100%产自欧洲工厂, 超过70年的生产经验, 卓越的品质, 是金相试样切割的理想选择。根据被切割的零件硬度, 匹配适用的切割片, 十分重要, 当零件和切割片不能匹配时, 就会出现阻力和震动大, 噪音响, 切偏, 烧伤等情况。我们精选了几种典型的硬度范围, 供选择。

M series cutting discs are 100% produced in European factories, with more than 70 years of production experience and excellent quality. They are ideal for metallographic sample cutting. It is very important to match the appropriate cutting disc according to the hardness of the parts to be cut. When the parts and cutting discs do not match, there will be resistance and vibration, noise, cutting deviation, burns, etc. We have selected several typical hardness ranges for selection.

M系列切割片
Cut-off Wheels Series M



接受定制款
Custom orders accepted

- M20S 钛合金, 软的有色金属
Titanium alloy, soft nonferrous metals
- M40A 软的黑色金属20~40HRC
Soft ferrous metals 20~40HRC
- M50A 中等硬度黑色金属39~58HRC
Medium hard ferrous metals 39~58HRC
- M60A 高硬度的黑色金属58~70HRC
High hard ferrous metals 58~70HRC



Cut-off Wheels Series M

M系列切割片



M40A (Soft ferrous metals 20~40HRC, Al₂O₃)

| 型号 Type | 尺寸 Size | 数量 Qty. | 货号 Part No. |
|---------|------------|---------|-------------|
| M40A20 | 200x0.6x32 | 10 | 10020203 |
| M40A25 | 250x1.5x32 | 10 | 10020253 |
| M40A30 | 300x2.0x32 | 10 | 10020303 |
| M40A35 | 350x2.5x32 | 10 | 10020353 |
| M40A40 | 400x3.0x32 | 10 | 10020403 |
| M40A43 | 432x3.0x32 | 10 | 10020433 |
| M40A50 | 500x3.6x32 | 10 | 10020503 |



M50A (Medium hard ferrous metals 39~58HRC, Al₂O₃)

| 型号 Type | 尺寸 Size | 数量 Qty. | 货号 Part No. |
|---------|------------|---------|-------------|
| M50A20 | 200x0.6x32 | 10 | 10020202 |
| M50A25 | 250x1.5x32 | 10 | 10020252 |
| M50A30 | 300x2.0x32 | 10 | 10020302 |
| M50A35 | 350x2.5x32 | 10 | 10020352 |
| M50A40 | 400x3.0x32 | 10 | 10020402 |
| M50A43 | 432x3.0x32 | 10 | 10020432 |
| M50A50 | 500x3.6x32 | 10 | 10020502 |



M60A (High hardness ferrous metals 58~70HRC, Al₂O₃)

| 型号 Type | 尺寸 Size | 数量 Qty. | 货号 Part No. |
|---------|------------|---------|-------------|
| M60A20 | 200x0.6x32 | 10 | 10020201 |
| M60A25 | 250x1.5x32 | 10 | 10020251 |
| M60A30 | 300x2.0x32 | 10 | 10020301 |
| M60A35 | 350x2.5x32 | 10 | 10020351 |
| M60A40 | 400x3.0x32 | 10 | 10020401 |
| M60A43 | 432x3.0x32 | 10 | 10020431 |
| M60A50 | 500x3.6x32 | 10 | 10020501 |



M20S (Titanium alloy, soft non ferrous metals, 8~38HRC, SiC)

| 型号 Type | 尺寸 Size | 数量 Qty. | 货号 Part No. |
|---------|------------|---------|-------------|
| M20S20 | 200x0.6x32 | 10 | 10020204 |
| M20S25 | 250x1.5x32 | 10 | 10020254 |
| M20S30 | 300x2.0x32 | 10 | 10020304 |
| M20S35 | 350x2.5x32 | 10 | 10020354 |
| M20S40 | 400x3.0x32 | 10 | 10020404 |
| M20S43 | 432x3.0x32 | 10 | 10020434 |
| M20S50 | 500x3.6x32 | 10 | 10020504 |

Cut-off Wheels Series L

L系列切割片

L系列切割片100%产自当地, 根据以往的经验数据, 我们精选了质量可靠的产品供客户选择。理想的切割效果, 需要匹配合适的硬度, 通常切割高硬度的产品, 需要选择软一些的切割片, 而低硬度的材质需要选择硬一点的切割片来切割, 这一点十分重要。

L series cutting discs are 100% produced locally. Based on past experience data, we have selected reliable products for customers to choose from. For ideal cutting results, the appropriate hardness needs to be matched. Usually, it is important to choose a softer cutting disc for cutting high-hardness products, and a harder cutting disc for cutting low-hardness materials.



L40A (Soft ferrous metals 20~40HRC, Al₂O₃)

| 型号 Type | 尺寸 Size | 数量 Qty. | 货号 Part No. |
|---------|------------|---------|-------------|
| L40A20 | 200x0.6x32 | 10 | 10030203 |
| L40A25 | 250x1.5x32 | 10 | 10030253 |
| L40A30 | 300x2.0x32 | 10 | 10030303 |
| L40A35 | 350x2.5x32 | 10 | 10030353 |
| L40A40 | 400x3.0x32 | 10 | 10030403 |
| L40A43 | 432x3.0x32 | 10 | 10030433 |
| L40A50 | 500x3.6x32 | 10 | 10030503 |



L50A (Medium hard ferrous metals 39~58HRC, Al₂O₃)

| 型号 Type | 尺寸 Size | 数量 Qty. | 货号 Part No. |
|---------|------------|---------|-------------|
| L50A20 | 200x0.6x32 | 10 | 10030202 |
| L50A25 | 250x1.5x32 | 10 | 10030252 |
| L50A30 | 300x2.0x32 | 10 | 10030302 |
| L50A35 | 350x2.5x32 | 10 | 10030352 |
| L50A40 | 400x3.0x32 | 10 | 10030402 |
| L50A43 | 432x3.0x32 | 10 | 10030432 |
| L50A50 | 500x3.6x32 | 10 | 10030502 |



L60A (High hardness ferrous metals 58~70HRC, Al₂O₃)

| 型号 Type | 尺寸 Size | 数量 Qty. | 货号 Part No. |
|---------|------------|---------|-------------|
| L60A20 | 200x0.6x32 | 10 | 10030201 |
| L60A25 | 250x1.5x32 | 10 | 10030251 |
| L60A30 | 300x2.0x32 | 10 | 10030301 |
| L60A35 | 350x2.5x32 | 10 | 10030351 |
| L60A40 | 400x3.0x32 | 10 | 10030401 |
| L60A43 | 432x3.0x32 | 10 | 10030431 |
| L60A50 | 500x3.6x32 | 10 | 10030501 |

Cut-off Wheels Series L

L系列切割片



L20S (Titanium alloy, soft non ferrous metals, 8~38HRC, SIC)

| 型号 Type | 尺寸 Size | 数量 Qty. | 货号 Part No. |
|---------|------------|---------|-------------|
| L20S20 | 200x0.6x32 | 10 | 10030204 |
| L20S25 | 250x1.5x32 | 10 | 10030254 |
| L20S30 | 300x2.0x32 | 10 | 10030304 |
| L20S35 | 350x2.5x32 | 10 | 10030354 |
| L20S40 | 400x3.0x32 | 10 | 10030404 |
| L20S43 | 432x3.0x32 | 10 | 10030434 |
| L20S50 | 500x3.6x32 | 10 | 10030504 |

Diamond & CBN Cut-off Wheels

金刚石&CBN切割片

- ① Resin or metal bonded;
- ② Abrasive width and thickness can be customized;
- ③ Diameter 100~450 can be customized;
- ④ Sharp and long cutting life;

- ① 树脂或金属结合；
- ② 磨料宽度&厚度可定制；
- ③ 直径100~450可定制；
- ④ 锋利&切割寿命长；



Diamond & CBN Cut-off Wheels

金刚石 & CBN切割片

我们的切割片适用于所有切割机, 可按需定制, 切割片应用领域包括, 硬质合金, 陶瓷, 玻璃, 石英, 石墨, 黑色 & 有色金属, 钨钢, 高速钢, 线路板, 等。

Our cutting blades are suitable for all cutting machines and can be customized according to needs. The application areas of cutting blades include hard alloys, ceramics, glass, quartz, graphite, black & non-ferrous metals, tungsten steel, high-speed steel, circuit boards, etc.



| 技术参数表 Technical Specifications Table | | | | | 树脂 Resin | | 金属 Metal |
|--------------------------------------|-------------------------------|--------------------------|---------------------------|----------------|----------------|----------|----------------|
| 外径 Outer Diameter | 磨料厚度 Abrasive Thickness | 体厚度 Body Thickness | 磨料宽度 Abrasive Width | 孔径 Aperture | 货号 Part No. | | 货号 Part No. |
| $\varnothing D$ (mm) | T(mm) | E(mm) | X(mm) | H*(mm) | 金刚石 Diamond | CBN | 金刚石 Diamond |
| 76.2 | 0.8 | 0.5 | 63.5 | 12.7 | 10760812 | 12076081 | 13076081 |
| 76.2 | 1.0 | 0.7 | 63.5 | 12.7 | 10761012 | 12076101 | 13076101 |
| 101.6 | 0.8 | 0.5 | 63.5 | 12.7/32 | 11010832 | 12101083 | 13101083 |
| 101.6 | 1.0 | 0.7 | 63.5 | 12.7/32 | 11010832 | 12101103 | 13101103 |
| 101.6 | 1.2 | 0.9 | 63.5 | 12.7/32 | 11011232 | 12101123 | 13101123 |
| 127.0 | 0.8 | 0.5 | 63.5 | 12.7/32 | 11270832 | 12127083 | 13127083 |
| 127.0 | 1.0 | 0.7 | 63.5 | 12.7/32 | 11271032 | 12127103 | 13127103 |
| 127.0 | 1.2 | 0.9 | 63.5 | 12.7/32 | 11271232 | 12127123 | 13127123 |
| 152.4 | 0.8 | 0.5 | 63.5 | 12.7/32 | 11520832 | 12152083 | 13152083 |
| 152.4 | 1.0 | 0.7 | 63.5 | 12.7/32 | 11521032 | 12153103 | 13153103 |
| 152.4 | 1.2 | 0.9 | 63.5 | 12.7/32 | 11521232 | 12151123 | 13151123 |
| 177.8 | 0.8 | 0.5 | 63.5 | 12.7/32 | 11780832 | 12128083 | 13128083 |
| 177.8 | 1.0 | 0.7 | 63.5 | 12.7/32 | 11781032 | 12128103 | 13128103 |
| 177.8 | 1.2 | 0.9 | 63.5 | 12.7/32 | 11781232 | 12128123 | 13128123 |
| 203.2 | 0.8 | 0.5 | 63.5 | 12.7/32 | 12030832 | 12203083 | 13203083 |
| 203.2 | 1.0 | 0.7 | 63.5 | 12.7/32 | 12031032 | 12203103 | 13203103 |
| 203.2 | 1.2 | 0.9 | 63.5 | 12.7/32 | 12031232 | 12203123 | 13203123 |
| 203.2 | 1.6 | 1.2 | 63.5 | 12.7/32 | 12031632 | 12203163 | 13203163 |
| 254.0 | 1.2 | 0.9 | 63.5 | 12.7/32 | 12541232 | 12254123 | 13254123 |
| 254.0 | 1.6 | 1.2 | 63.5 | 12.7/32 | 12541632 | 12254163 | 13254163 |
| 304.8 | 1.2 | 0.9 | 63.5 | 12.7/32 | 13051232 | 12305123 | 13305123 |
| 304.8 | 1.6 | 1.2 | 63.5 | 12.7/32 | 13051632 | 12305163 | 13305163 |

Cutting Fluid Series HTCL

HTCL切削液

HTCL切削液是一种环保的合成水溶型切削液，用于金属的切割冷却润滑。这种液体提供优良的润滑和最佳的冷却效果，使材料的微观组织结构在切割过程中不被破坏。在润滑切削的同时避免了过热。它还具有最佳的粘度，良好流动性

HTCL cutting fluid is an environmentally friendly synthetic water-soluble cutting fluid used for cooling and lubricating the cutting of metals. This liquid provides excellent lubrication and the best cooling effect, preventing the microscopic structure of the material from being damaged during the cutting process. It also avoids overheating while lubricating the cutting. It also has the best viscosity and good fluidity.

- ✓ 安全环保
Safe and environmentally friendly
- ✓ 稳定的抑制泡沫
Stable foam suppression
- ✓ 有效的防腐蚀保护
Effective corrosion protection
- ✓ 良好的冷却能力和防臭效果
Excellent cooling capacity and odor prevention effect



| 应用 Application | 型号 Type | 比例 Ratio | 包装 Pack. | 货号 Part No. |
|--|---------|----------|----------|-------------|
| 金相切割机专用，按照水箱大小进行配比 | HTCL | 4~5% | 1 | 19000010 |
| Special for metallographic cutting machine, proportioned according to the size of the water tank | HTCL | 4~5% | 5 | 19000500 |
| | HTCL | 4~5% | 10 | 19001000 |

Filter Bag

切割机过滤袋

应用于金相切割机冷却水箱，粗细滤网组合

Applied to cooling water tank of metallographic cutting machine, combination of coarse and fine filter screens



尺寸接受定制 ✓

Sizes can be customized

| 描述 Description | 尺寸 Size | 数量 Qty. | 货号 Part No. |
|---------------------|--------------------|---------|-------------|
| 60μm+800μm 组合过滤网 | 490 x 290 x 190 mm | 1 | 92030111 |
| | 490 x 290 x 190 mm | 5 | 92030121 |
| | 290 x 150 x 190 mm | 1 | 92030112 |
| | 290 x 150 x 190 mm | 5 | 92030122 |
| | 250 x 200 x 155 mm | 1 | 92030113 |
| | 250 x 200 x 155 mm | 5 | 92030123 |

Hot Mounting Resins

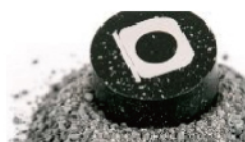
热镶嵌料

| 品名 Type | 加热时间 Heating time (Min.) | | | | 冷却时间 Cooling time (Min.) | | | | 压力 Pressure (daN) | | | | 温度 Temperature (°C) | | | |
|----------------------|-----------------------------|-----------|-----------|-----------|-----------------------------|-----------|-----------|-----------|----------------------|-----------|-----------|-----------|------------------------|-----------|-----------|-----------|
| | Ø25 mm | Ø30 mm | Ø40 mm | Ø50 mm | Ø25 mm | Ø30 mm | Ø40 mm | Ø50 mm | Ø25 mm | Ø30 mm | Ø40 mm | Ø50 mm | Ø25 mm | Ø30 mm | Ø40 mm | Ø50 mm |
| 环氧树脂 EPO | 4 | 5 | 6 | 7 | 4 | 4 | 4 | 5 | 800 | 1000 | 1200 | 1400 | 180 | 180 | 180 | 180 |
| 环氧 + 玻纤 EPO+ | 4 | 5 | 6 | 7 | 4 | 4 | 4 | 5 | 800 | 1000 | 1200 | 1400 | 180 | 180 | 180 | 180 |
| 密胺树脂 Melamine | 4 | 5 | 6 | 7 | 5 | 5 | 6 | 7 | 800 | 1000 | 1200 | 1400 | 160 | 160 | 160 | 160 |
| 透明树脂 Thrmoplastic | 5 | 6 | 7 | 8 | 5 | 5 | 5 | 6 | 800 | 1000 | 1200 | 1400 | 170 | 170 | 170 | 170 |
| 快速树脂 Fast Black | 3.5 | 4 | 4.5 | 5 | 3 | 3.5 | 4 | 5 | 800 | 1000 | 1200 | 1400 | 180 | 180 | 180 | 180 |
| 快速树脂 Fast Bule | 3.5 | 4 | 4.5 | 5 | 3 | 3.5 | 4 | 5 | 800 | 1000 | 1200 | 1400 | 180 | 180 | 180 | 180 |
| 石墨导电树脂 Conductive | 4 | 4.5 | 5 | 5.5 | 3 | 3.5 | 4 | 5 | 800 | 1000 | 1200 | 1400 | 160 | 160 | 160 | 160 |
| 保边树脂 Phenolic+ | 4 | 4.5 | 5 | 5.5 | 3 | 3.5 | 4 | 5 | 800 | 1000 | 1200 | 1400 | 160 | 160 | 160 | 160 |
| 普通树脂 Phenolic | 4 | 4.5 | 5 | 5.5 | 3 | 3.5 | 4 | 5 | 800 | 1000 | 1200 | 1400 | 150 | 150 | 150 | 150 |
| 普通透明 Acrylic | 4.5 | 5 | 5.5 | 6 | 4.5 | 4.5 | 5 | 5 | 800 | 1000 | 1200 | 1400 | 180 | 180 | 180 | 180 |



环氧树脂 Epoxy Resins (EPO) HTEP

| 产品特性 Product Characteristics | 包装 Pack.(Kg) | 货号 Part No. |
|---|--------------|-------------|
| 黑色颗粒状, 硬度高! 邵氏 D90~93 边缘保护佳附着好! 耐腐蚀 | 1 | 25800001 |
| Black granular, high hardness! Shore D90~93 edge protection is well attached! Corrosion resistance | 7.5 | 25800075 |
| | 10 | 25800010 |



环氧树脂 Epoxy Resins (EPO+) HGEP

| | | |
|--|-----|----------|
| 黑色颗粒 + 玻纤填充, 硬度高! 邵氏 D90~93 边缘保护佳附着好! 耐腐蚀 | 1 | 25810001 |
| Black particles + glass fiber filling, high hardness! Shore D90~93 edge protection is well attached! Corrosion resistance | 7.5 | 25810075 |
| | 10 | 25810010 |



密胺树脂 Melamine Resins HUNI

| | | |
|--|-----|----------|
| 象牙白色颗粒 + 玻纤, 高硬度 良好的边缘保护, 邵氏硬度 87~90D, 耐腐蚀 | 1 | 25820001 |
| Elephant white particles + fiberglass, high hardness Good edge protection, Shore hardness 87~90D, corrosion resistant | 7.5 | 25820075 |
| | 10 | 25820010 |



透明树脂 Clear Resins IKAR

| | | |
|---|-----|----------|
| 白色颗粒 + 玻纤, 高硬度, 透明 良好的边缘保护, 邵氏硬度 85~87D, 耐腐蚀 | 1 | 25840001 |
| White granules + fiberglass, high hardness, transparent Good edge protection, Shore hardness 85~87D, corrosion resistant | 7.5 | 25840075 |
| | 10 | 25840010 |

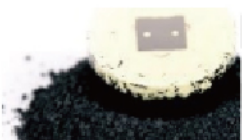


快速树脂 Fast Black HFGB

| | | |
|---|-----|----------|
| 黑色颗粒, 邵氏硬度 87~90D, 可快速镶嵌 良好的边缘保护性能, 耐腐蚀 | 1 | 25851001 |
| Black particles, Shore hardness 87~90D, fast inlay Good edge protection and corrosion resistance | 7.5 | 25850750 |
| | 10 | 25851000 |

Hot Mounting Resins

热镶嵌料



快速树脂 Fast Bule HPFB

| 产品特性 Product Characteristics | 包装 Pack.(Kg) | 货号 Part No. |
|--|--------------|-------------|
| 蓝色颗粒, 邵氏硬度 87~90D, 可快速镶嵌 良好的边缘保护性能, 耐腐蚀 | 1 | 25861001 |
| Blue particles, Shore hardness 87~90D, fast inlay Good edge protection and corrosion resistance | 7.5 | 25860750 |
| | 10 | 25861000 |

导电型树脂 Conductive HREM

| | | |
|--|-----|----------|
| 黑色颗粒, 石墨型, 邵氏硬度 75~80D 适用于电镜, 电解抛光 | 1 | 25871001 |
| Black particle, graphite type, Shore hardness 75~80D Applicable to electron microscope and electrolytic polishing | 7.5 | 25870750 |
| | 10 | 25871000 |

保边树脂 Phenolic+ 颗粒状 HQGB

| | | |
|---|-----|----------|
| 黑色颗粒, 邵氏硬度 85~90D 良好的边缘保护性能, 耐腐蚀 | 1 | 21040001 |
| Black particles, Shore hardness 85~90D Good edge protection and corrosion resistance | 4 | 21040004 |
| | 7.5 | 21040075 |
| | 10 | 21040010 |

保边树脂 Phenolic+ 粉状 HQFB

| | | |
|--|-----|----------|
| 黑色粉状, 邵氏硬度 85~90D 适用于手动镶嵌机 | 1 | 21041001 |
| 良好的边缘保护性能, 有一定的耐腐蚀性 | 4 | 21041004 |
| Black powder, Shore hardness 85~90D, Applicable to manual inlaying machine, Good edge protection and certain corrosion resistance | 7.5 | 21041075 |
| | 10 | 21041010 |

普通树脂 Phenolic 颗粒状 HEGB

| | | |
|---|-----|----------|
| 黑色颗粒, 经济型, 邵氏硬度 85D 左右 适用于普通要求的样品镶嵌 | 1 | 21042001 |
| Black particle, economical type, about 85D Shore hardness Applicable to sample inlay of general requirements | 4 | 21042004 |
| | 7.5 | 21042075 |
| | 10 | 21042010 |

普通树脂 Phenolic 粉状 HEFB

| | | |
|---|-----|----------|
| 黑色粉装, 经济型, 邵氏硬度 85D 左右 适用于普通要求的样品镶嵌, 适合手动镶嵌机 | 1 | 21043001 |
| Black powder, economical type, about 85D Shore hardness Applicable to sample inlay of general requirements Suitable for manual inlaying machine | 4 | 21043004 |
| | 7.5 | 21043075 |
| | 10 | 21043070 |

亚克力树脂 Phenolic 粉状 HKAR

| | | |
|---|-----|----------|
| 白色细颗粒, 透明型, 邵氏硬度 83D 左右 适用于普通要求的样品镶嵌 | 1 | 21060001 |
| White fine grain, transparent, about 83D Shore hardness Applicable to sample inlay of general requirements | 4 | 21060004 |
| | 7.5 | 21060075 |
| | 10 | 21060010 |

白色树脂 Phenolic 粉状 HWMF

| | | |
|--|-----|----------|
| 白色细颗粒, 邵氏硬度 83D 左右 适用于普通要求的样品镶嵌 | 1 | 21070001 |
| White fine grain, about 83D Shore hardness Applicable to sample inlay of general requirements | 4 | 21070004 |
| | 7.5 | 21070075 |
| | 10 | 21070010 |

Cold Mounting Resins

冷镶嵌料

这种透明的镶嵌树脂具有良好的流动性，且收缩率极低，这使得其在腔体中的填充率能达到最高水平。它非常适合切片检测，微电子、光学和微系统应用领域。还适用于常规的扫描电子显微镜 (SEM) 检查。

The fluidity of this transparent mounting resin and its very low shrinkage ensure a maximum penetration ratio in cavities. It is ideal for microelectronics, optics and microsystem applications. Compatible for conventional scanning electron microscopy (SEM) examinations.

- ✓ 高透亚克力树脂
High permeability acrylic resin
- ✓ 混合比例: 1:0.8
Mixing ratio: 1:0.8
- ✓ 25°C固化时间: 约15分钟
Curing time at 25 °C: about 15 minutes

- ✓ 高透明环氧树脂
High transparent epoxy resin
- ✓ 气味小
Small odour
- ✓ 透明度高
Good transparency
- ✓ 混合比例: 2: 1
Mixing ratio: 2:1
- ✓ 25°C固化时间约1小时
Curing time of about 1 hour at 25 °C

- ✓ 高透明环氧树脂
High transparent epoxy resin
- ✓ 气味小
Small odour
- ✓ 透明度高
Good transparency
- ✓ 混合比例: 2: 1
Mixing ratio: 2:1
- ✓ 25°C固化时间: 2~4H
Curing time at 25 °C: 2~4H

ACRYLIC RESIN 亚克力树脂 AR15

| 品名 Type | 包装 Pack. | 货号 Part No. |
|-------------------|-----------|-------------|
| AR15 Resins 树脂 | 1000g | 20015151 |
| AR15 Hardener 固化剂 | 800ml | 20015152 |
| AR15 套装 | 1kg+800ml | 20010150 |

EPOXY RESIN 环氧树脂 EP01(~1H)

| 品名 Type | 包装 Pack. | 货号 Part No. |
|--------------------|-------------|-------------|
| EP01R Resins 树脂 | 1000g | 20031013 |
| EP01H Hardener 固化剂 | 500g | 20031014 |
| EP01 套装 | 1000g+500g | 20031010 |
| EP01 套装 | 2000g+1000g | 20031011 |
| EP01 套装 | 10kg+5kg | 20031012 |

EPOXY RESIN 环氧树脂 EP02(2~4H)

| 品名 Type | 包装 Pack. | 货号 Part No. |
|--------------------|-------------|-------------|
| EP02R Resins 树脂 | 1000g | 20031023 |
| EP02H Hardener 固化剂 | 500g | 20031024 |
| EP02 套装 | 1000g+500g | 20031020 |
| EP02 套装 | 2000g+1000g | 20031021 |
| EP02 套装 | 10kg+5kg | 20031022 |

Cold Mounting Resins

冷镶嵌料



✓ 高透明环氧树脂
High transparent epoxy resin

✓ 气味小
Small odour

✓ 透明度好
Good transparency

✓ 混合比例: 2: 1
Mixing ratio: 2:1

✓ 25°C固化时间: 6~8H
Curing time at 25 °C: 6~8H

✓ 高透明环氧树脂
High transparent epoxy resin

✓ 气味小
Small odour

✓ 透明度好
Good transparency

✓ 混合比例: 2: 1
Mixing ratio: 2:1

✓ 25°C固化时间: 8~12H
Curing time at 25 °C: 8~12H

✓ 高透明环氧树脂
High transparent epoxy resin

✓ 气味小
Small odour

✓ 透明度好
Good transparency

✓ 混合比例: 3: 1
Mixing ratio: 3:1

✓ 25°C固化时间: ~24H
Curing time at 25 °C: ~24H

EPOXY RESIN 环氧树脂 EP06(6~8H)

| 品名 Type | 包装 Pack. | 货号 Part No. |
|--------------------|-------------|-------------|
| EP06R Resins 树脂 | 1000g | 20031063 |
| EP06H Hardener 固化剂 | 500g | 20031064 |
| EP06 套装 | 1000g+500g | 20031060 |
| EP06 套装 | 2000g+1000g | 20031061 |
| EP06 套装 | 10kg+5kg | 20031022 |

EPOXY RESIN 环氧树脂 EP12(8~12H)

| 品名 Type | 包装 Pack. | 货号 Part No. |
|--------------------|-------------|-------------|
| EP12R Resins 树脂 | 1000g | 20031123 |
| EP12H Hardener 固化剂 | 500g | 20031124 |
| EP12 套装 | 1000g+500g | 20031120 |
| EP12 套装 | 2000g+1000g | 20031121 |
| EP12 套装 | 10kg+5kg | 20031122 |

EPOXY RESIN 环氧树脂 EP24(~24H)

| 品名 Type | 包装 Pack. | 货号 Part No. |
|--------------------|-------------|-------------|
| EP24R Resins 树脂 | 1000g | 20031243 |
| EP24H Hardener 固化剂 | 333g | 20031244 |
| EP24 套装 | 1000g+333g | 20031240 |
| EP24 套装 | 2000g+666g | 20031241 |
| EP24 套装 | 10kg+3.33kg | 20031242 |

Cold Mounting Auxiliaries

冷镶嵌辅件

- ☑ 硅胶模具
Silicone mold
- ☑ 适用于抽真空和压力锅镶嵌
Suitable for vacuum pumping and pressure cooker inlay

- ☑ 良好的尺寸保证能力
Good size assurance capability
- ☑ 可重复使用
Reusable



Circular Silicone Mold 圆形硅胶模具

| 型号 Type | 内高 Internal Height(mm) | 内径 Inner Diameter(mm) | 包装 Pcs | 货号 Part No. |
|---------|------------------------|-----------------------|--------|-------------|
| CMRB | 18 | 20 | 1 | 29182001 |
| | 18 | 25 | 1 | 29182501 |
| | 18 | 30 | 1 | 29183001 |
| | 23 | 40 | 1 | 29234001 |
| | 23 | 50 | 1 | 29235001 |



Circular Hard Mold 圆形硬模具

| 型号 Type | 内高 Internal Height(mm) | 内径 Inner Diameter(mm) | 包装 Pcs | 货号 Part No. |
|---------|------------------------|-----------------------|--------|-------------|
| CMHM | 18 | 25 | 1 | 29251801 |
| | 19 | 25 | 1 | 29251901 |
| | 26 | 30 | 1 | 29302601 |
| | 26 | 32 | 1 | 29321601 |



Square Soft Mold 方形软模具

| 型号 Type | 内尺寸 Internal Size | 包装 Pcs | 货号 Part No. |
|---------|--------------------------------------|--------|-------------|
| CSRB | Length 50 x Width 20 x Height 20 mm | 1 | 29502001 |
| | Length 50 x Width 30 x Height 18 mm | 1 | 29503001 |
| | Length 70 x Width 40 x Height 23 mm | 1 | 29704001 |
| | Length 100 x Width 50 x Height 25 mm | 1 | 29102501 |

Cold Inlay Fixture 冷镶夹具

| 型号 Type | 尺寸 Size(mm) | 描述 Description | 包装 Pcs | 货号 Part No. |
|---------|--------------|--|--------|-------------|
| CMTC | 13 x 10 x 10 | 材质 POP, 黑色三角夹 Material POP, black triangle clip | 100 | 29901100 |
| CMTC | 13 x 10 x 10 | 材质 POP, 白色三角夹 Material POP, white triangle clip | 100 | 29902100 |
| CMTC | 13 x 10 x 10 | 材质 PMMA, 黑色三角夹 Material PMMA, black triangle clip | 100 | 29903100 |
| CMTC | 13 x 10 x 6 | 材质 PMMA, 白色三角夹 Material PMMA, white triangle clip | 100 | 29904100 |
| CMRC | 85 x 6 | 材质 PET, 卷夹 Material PET, roll clamp | 100 | 29905100 |
| CMRC | 100 x 8 | 材质 PET, 卷夹 Material PET, roll clamp | 100 | 29906100 |
| CMSC | 15 x 9 x 6.3 | 材质 206, 卷夹 Material 206, roll clamp | 100 | 29907100 |
| CMPC | 13 x 10 x 10 | 材质 PA, 黑色卷夹 Material PA, black roll clip | 100 | 29908100 |

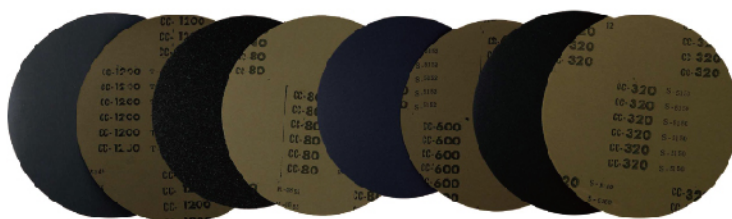


SIC Abrasive Paper (Import)

进口金相砂纸

Non-self-adhesive

无背胶 HISP, 100Pcs/Box



| 目数 Grit | Ø200mm | Ø203mm | Ø228mm | Ø230mm | Ø250mm | Ø254mm | Ø300mm | Ø305mm |
|---------|----------|----------|----------|----------|----------|----------|----------|----------|
| P60 | 36000600 | 36000601 | 36000602 | 36000603 | 36000604 | 36000605 | 36000606 | 36000607 |
| P80 | 36000800 | 36000801 | 36000802 | 36000803 | 36000804 | 36000805 | 36000806 | 36000807 |
| P120 | 36001200 | 36001201 | 36001202 | 36001203 | 36001204 | 36001205 | 36001206 | 36001207 |
| P180 | 36001800 | 36001801 | 36001802 | 36001803 | 36001804 | 36001805 | 36001806 | 36001807 |
| P240 | 36002400 | 36002401 | 36002402 | 36002403 | 36002404 | 36002405 | 36002406 | 36002407 |
| P320 | 36003200 | 36003201 | 36003202 | 36003203 | 36003204 | 36003205 | 36003206 | 36003207 |
| P400 | 36004000 | 36004001 | 36004002 | 36004003 | 36004004 | 36004005 | 36004006 | 36004007 |
| P500 | 36005000 | 36005001 | 36005002 | 36005003 | 36005004 | 36005005 | 36005006 | 36005007 |
| P600 | 36006000 | 36006001 | 36006002 | 36006003 | 36006004 | 36006005 | 36006006 | 36006007 |
| P800 | 36000600 | 36000601 | 36000602 | 36000603 | 36000604 | 36000605 | 36000606 | 36000607 |
| P1000 | 36010000 | 36010001 | 36010002 | 36010003 | 36010004 | 36010005 | 36010006 | 36010007 |
| P1200 | 36012000 | 36012001 | 36012002 | 36012003 | 36012004 | 36012005 | 36012006 | 36012007 |
| P1500 | 36015000 | 36015001 | 36015002 | 36015003 | 36015004 | 36015005 | 36015006 | 36015007 |
| P2000 | 36020000 | 36020001 | 36020002 | 36020003 | 36020004 | 36020005 | 36020006 | 36020007 |
| P2400 | 36024000 | 36024001 | 36024002 | 36024003 | 36024004 | 36024005 | 36024006 | 36024007 |
| P2500 | 36025000 | 36025001 | 36025002 | 36025003 | 36025004 | 36025005 | 36025006 | 36025007 |
| P3000 | 36030000 | 36030001 | 36030002 | 36030003 | 36030004 | 36030005 | 36030006 | 36030007 |
| P4000 | 36040000 | 36040001 | 36040002 | 36040003 | 36040004 | 36040005 | 36040006 | 36040007 |
| P2400S | 30024000 | 30024001 | 30024002 | 30024003 | 30024004 | 30024005 | 30024006 | 30024007 |
| P4000S | 30040000 | 30040001 | 30040002 | 30040003 | 30040004 | 30040005 | 30040006 | 30040007 |

Self-adhesive

背胶 HIST, 100Pcs/Box



| 目数 Grit | Ø200mm | Ø203mm | Ø228mm | Ø230mm | Ø250mm | Ø254mm | Ø300mm | Ø305mm |
|---------|----------|----------|----------|----------|----------|----------|----------|----------|
| P60 | 36100600 | 36100601 | 36100602 | 36100603 | 36100604 | 36100605 | 36100606 | 36100607 |
| P80 | 36100800 | 36100801 | 36100802 | 36100803 | 36100804 | 36100805 | 36100806 | 36100807 |
| P120 | 36101200 | 36101201 | 36101202 | 36101203 | 36101204 | 36101205 | 36101206 | 36101207 |
| P180 | 36101800 | 36101801 | 36101802 | 36101803 | 36101804 | 36101805 | 36101806 | 36101807 |
| P240 | 36102400 | 36102401 | 36102402 | 36102403 | 36102404 | 36102405 | 36102406 | 36102407 |
| P320 | 36103200 | 36103201 | 36103202 | 36103203 | 36103204 | 36103205 | 36103206 | 36103207 |
| P400 | 36104000 | 36104001 | 36104002 | 36104003 | 36104004 | 36104005 | 36104006 | 36104007 |
| P500 | 36105000 | 36105001 | 36105002 | 36105003 | 36105004 | 36105005 | 36105006 | 36105007 |
| P600 | 36106000 | 36106001 | 36106002 | 36106003 | 36106004 | 36106005 | 36106006 | 36106007 |
| P800 | 36100600 | 36100601 | 36100602 | 36100603 | 36100604 | 36100605 | 36100606 | 36100607 |
| P1000 | 36110000 | 36110001 | 36110002 | 36110003 | 36110004 | 36110005 | 36110006 | 36110007 |
| P1200 | 36112000 | 36112001 | 36112002 | 36112003 | 36112004 | 36112005 | 36112006 | 36112007 |
| P1500 | 36115000 | 36115001 | 36115002 | 36115003 | 36115004 | 36115005 | 36115006 | 36115007 |
| P2000 | 36120000 | 36120001 | 36120002 | 36120003 | 36120004 | 36120005 | 36120006 | 36120007 |
| P2400 | 36124000 | 36124001 | 36124002 | 36124003 | 36124004 | 36124005 | 36124006 | 36124007 |
| P2500 | 36125000 | 36125001 | 36125002 | 36125003 | 36125004 | 36125005 | 36125006 | 36125007 |
| P3000 | 36130000 | 36130001 | 36130002 | 36130003 | 36130004 | 36130005 | 36130006 | 36130007 |
| P4000 | 36140000 | 36140001 | 36140002 | 36140003 | 36140004 | 36140005 | 36140006 | 36140007 |
| P2400S | 30124000 | 30124001 | 30124002 | 30124003 | 30124004 | 30124005 | 30124006 | 30124007 |
| P4000S | 30140000 | 30140001 | 30140002 | 30140003 | 30140004 | 30140005 | 30140006 | 30140007 |

SIC Abrasive Paper (Local)

国产金相砂纸

Kraft paper base, Non-self-adhesive

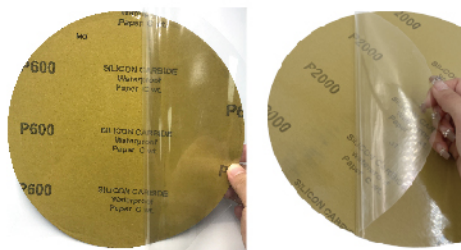
牛皮纸基无背胶 ZSNP, 100Pcs/Box



| 目数 Grit | Ø200mm | Ø203mm | Ø228mm | Ø230mm | Ø250mm | Ø254mm | Ø300mm | Ø305mm |
|---------|----------|----------|----------|----------|----------|----------|----------|----------|
| P60 | 32030060 | 32030061 | 32030062 | 32030063 | 32030064 | 32030065 | 32030066 | 32030067 |
| P80 | 32030080 | 32030081 | 32030082 | 32030083 | 32030084 | 32030085 | 32030086 | 32030087 |
| P120 | 32030120 | 32031201 | 32031202 | 32031203 | 32031204 | 32031205 | 32031206 | 32031207 |
| P180 | 32030180 | 32031801 | 32031802 | 32031803 | 32031804 | 32031805 | 32031806 | 32031807 |
| P240 | 32030240 | 32030241 | 32030242 | 32030243 | 32030244 | 32030245 | 32030246 | 32030247 |
| P320 | 32030320 | 32030321 | 32030322 | 32030323 | 32030324 | 32030325 | 32030326 | 32030327 |
| P400 | 32030400 | 32030401 | 32030402 | 32030403 | 32030404 | 32030405 | 32030406 | 32030407 |
| P500 | 32030500 | 32030501 | 32030502 | 32030503 | 32030504 | 32030505 | 32030506 | 32030507 |
| P600 | 32030600 | 32030601 | 32030602 | 32030603 | 32030604 | 32030605 | 32030606 | 32030607 |
| P800 | 32030800 | 32030801 | 32030802 | 32030803 | 32030804 | 32030805 | 32030806 | 32030807 |
| P1000 | 32031000 | 32031001 | 32031002 | 32031003 | 32031004 | 32031005 | 32031006 | 32031007 |
| P1200 | 32031200 | 32031201 | 32031202 | 32031203 | 32031204 | 32031205 | 32031206 | 32031207 |
| P1500 | 32031500 | 32031501 | 32031502 | 32031503 | 32031504 | 32031505 | 32031506 | 32031507 |
| P2000 | 32032000 | 32032001 | 32032002 | 32032003 | 32032004 | 32032005 | 32032006 | 32032007 |
| P2500 | 32032500 | 32032501 | 32032502 | 32032503 | 32032504 | 32032505 | 32032506 | 32032507 |
| P4000 | 32034000 | 32034001 | 32034002 | 32034003 | 32034004 | 32034005 | 32034006 | 32034007 |

Kraft paper base, Self-adhesive

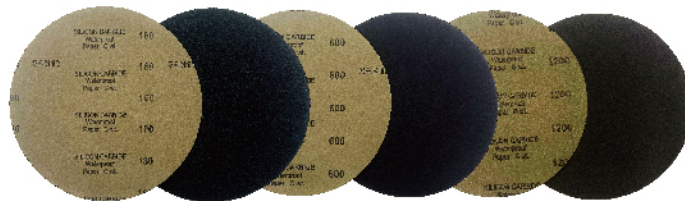
牛皮纸基背胶 ZSNT, 100Pcs/Box



| 目数 Grit | Ø200mm | Ø203mm | Ø228mm | Ø230mm | Ø250mm | Ø254mm | Ø300mm | Ø305mm |
|---------|----------|----------|----------|----------|----------|----------|----------|----------|
| P60 | 32040060 | 32040061 | 32040062 | 32040063 | 32040064 | 32040065 | 32040066 | 32040067 |
| P80 | 32040080 | 32040081 | 32040082 | 32040083 | 32040084 | 32040085 | 32040086 | 32040087 |
| P120 | 32040120 | 32041201 | 32041202 | 32041203 | 32041204 | 32041205 | 32041206 | 32041207 |
| P180 | 32040180 | 32041801 | 32041802 | 32041803 | 32041804 | 32041805 | 32041806 | 32041807 |
| P240 | 32040240 | 32040241 | 32040242 | 32040243 | 32040244 | 32040245 | 32040246 | 32040247 |
| P320 | 32040320 | 32040321 | 32040322 | 32040323 | 32040324 | 32040325 | 32040326 | 32040327 |
| P400 | 32040400 | 32040401 | 32040402 | 32040403 | 32040404 | 32040405 | 32040406 | 32040407 |
| P500 | 32040500 | 32040501 | 32040502 | 32040503 | 32040504 | 32040505 | 32040506 | 32040507 |
| P600 | 32040600 | 32040601 | 32040602 | 32040603 | 32040604 | 32040605 | 32040606 | 32040607 |
| P800 | 32040800 | 32040801 | 32040802 | 32040803 | 32040804 | 32040805 | 32040806 | 32040807 |
| P1000 | 32041000 | 32041001 | 32041002 | 32041003 | 32041004 | 32041005 | 32041006 | 32041007 |
| P1200 | 32041200 | 32041201 | 32041202 | 32041203 | 32041204 | 32041205 | 32041206 | 32041207 |
| P1500 | 32041500 | 32041501 | 32041502 | 32041503 | 32041504 | 32041505 | 32041506 | 32041507 |
| P2000 | 32042000 | 32042001 | 32042002 | 32042003 | 32042004 | 32042005 | 32042006 | 32042007 |
| P2500 | 32042500 | 32042501 | 32042502 | 32042503 | 32042504 | 32042505 | 32042506 | 32042507 |
| P4000 | 32044000 | 32044001 | 32044002 | 32044003 | 32044004 | 32044005 | 32044006 | 32044007 |

SIC Abrasive Paper (Local)

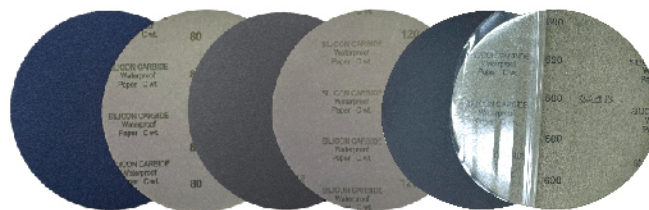
国产金相砂纸



Latex paper-based, Non- self-adhesive

乳胶纸基无背胶 ZSRP, 100Pcs/Box

| 目数 Grit | Ø200mm | Ø203mm | Ø228mm | Ø230mm | Ø250mm | Ø254mm | Ø300mm | Ø305mm |
|---------|----------|----------|----------|----------|----------|----------|----------|----------|
| P60 | 32000060 | 32000061 | 32000062 | 32000063 | 32000064 | 32000065 | 32000066 | 32000067 |
| P80 | 32000080 | 32000081 | 32000082 | 32000083 | 32000084 | 32000085 | 32000086 | 32000087 |
| P120 | 32000120 | 32001201 | 32001202 | 32001203 | 32001204 | 32001205 | 32001206 | 32001207 |
| P180 | 32000180 | 32001801 | 32001802 | 32001803 | 32001804 | 32001805 | 32001806 | 32001807 |
| P240 | 32000240 | 32000241 | 32000242 | 32000243 | 32000244 | 32000245 | 32000246 | 32000247 |
| P320 | 32000320 | 32000321 | 32000322 | 32000323 | 32000324 | 32000325 | 32000326 | 32000327 |
| P400 | 32000400 | 32000401 | 32000402 | 32000403 | 32000404 | 32000405 | 32000406 | 32000407 |
| P500 | 32000500 | 32000501 | 32000502 | 32000503 | 32000504 | 32000505 | 32000506 | 32000507 |
| P600 | 32000600 | 32000601 | 32000602 | 32000603 | 32000604 | 32000605 | 32000606 | 32000607 |
| P800 | 32000800 | 32000801 | 32000802 | 32000803 | 32000804 | 32000805 | 32000806 | 32000807 |
| P1000 | 32001000 | 32001001 | 32001002 | 32001003 | 32001004 | 32001005 | 32001006 | 32001007 |
| P1200 | 32001200 | 32001201 | 32001202 | 32001203 | 32001204 | 32001205 | 32001206 | 32001207 |
| P1500 | 32001500 | 32001501 | 32001502 | 32001503 | 32001504 | 32001505 | 32001506 | 32001507 |
| P2000 | 32002000 | 32002001 | 32002002 | 32002003 | 32002004 | 32002005 | 32002006 | 32002007 |
| P2500 | 32002500 | 32002501 | 32002502 | 32002503 | 32002504 | 32002505 | 32002506 | 32002507 |
| P4000 | 32004000 | 32004001 | 32004002 | 32004003 | 32004004 | 32004005 | 32004006 | 32004007 |



Latex paper-based, Self-adhesive

乳胶纸基背胶 ZSRT, 100Pcs/Box

| 目数 Grit | Ø200mm | Ø203mm | Ø228mm | Ø230mm | Ø250mm | Ø254mm | Ø300mm | Ø305mm |
|---------|----------|----------|----------|----------|----------|----------|----------|----------|
| P60 | 32010060 | 32010061 | 32010062 | 32010063 | 32010064 | 32010065 | 32010066 | 32010067 |
| P80 | 32010080 | 32010081 | 32010082 | 32010083 | 32010084 | 32010085 | 32010086 | 32010087 |
| P120 | 32010120 | 32011201 | 32011202 | 32011203 | 32011204 | 32011205 | 32011206 | 32011207 |
| P180 | 32010180 | 32011801 | 32011802 | 32011803 | 32011804 | 32011805 | 32011806 | 32011807 |
| P240 | 32010240 | 32010241 | 32010242 | 32010243 | 32010244 | 32010245 | 32010246 | 32010247 |
| P320 | 32010320 | 32010321 | 32010322 | 32010323 | 32010324 | 32010325 | 32010326 | 32010327 |
| P400 | 32010400 | 32010401 | 32010402 | 32010403 | 32010404 | 32010405 | 32010406 | 32010407 |
| P500 | 32010500 | 32010501 | 32010502 | 32010503 | 32010504 | 32010505 | 32010506 | 32010507 |
| P600 | 32010600 | 32010601 | 32010602 | 32010603 | 32010604 | 32010605 | 32010606 | 32010607 |
| P800 | 32010800 | 32010801 | 32010802 | 32010803 | 32010804 | 32010805 | 32010806 | 32010807 |
| P1000 | 32011000 | 32011001 | 32011002 | 32011003 | 32011004 | 32011005 | 32011006 | 32011007 |
| P1200 | 32011200 | 32011201 | 32011202 | 32011203 | 32011204 | 32011205 | 32011206 | 32011207 |
| P1500 | 32011500 | 32011501 | 32011502 | 32011503 | 32011504 | 32011505 | 32011506 | 32011507 |
| P2000 | 32012000 | 32012001 | 32012002 | 32012003 | 32012004 | 32012005 | 32012006 | 32012007 |
| P2500 | 32012500 | 32012501 | 32012502 | 32012503 | 32012504 | 32012505 | 32012506 | 32012507 |
| P4000 | 32014000 | 32014001 | 32014002 | 32014003 | 32014004 | 32014005 | 32014006 | 32014007 |

Grain Sizes 目数 & 粒度

| 目数 FEPA Standard | 80 | 120 | 180 | 240 | 320 | 400 | 600 | 800 | 1000 | 1200 | 2400 | 4000 |
|------------------|-----|-----|-----|-----|-----|-----|-----|-----|------|------|------|------|
| 粒度 Grains(μm) | 201 | 125 | 82 | 59 | 46 | 35 | 26 | 22 | 18 | 15 | 10 | 5 |

Coated Sandpaper (Import)

进口覆膜砂纸

覆膜砂纸是一种微米级精密厚度的聚酯薄膜，静电涂层有氧化铝或碳化硅颗粒。静电涂层工艺和专用树脂结合，是一个非常好的产品，研磨效率佳，适用于各种材料的制备。

Coated sandpaper is a fine-thickness polyester film with electrostatic coating of aluminum oxide or silicon carbide particles. The combination of electrostatic coating process and special resin is a very good product with good grinding efficiency, which is applicable to the preparation of various materials.

- ✓ 微米级配优质磨料
Micron grade high quality abrasive
- ✓ 耐水、耐油、耐大部分溶剂
Water, oil and resistant to most solvents
- ✓ 颜色编码，快速识别
Color coding, fast identification
- ✓ 为均匀性和样品平整度提供可靠的支撑
Provides reliable support for uniformity and sample flatness



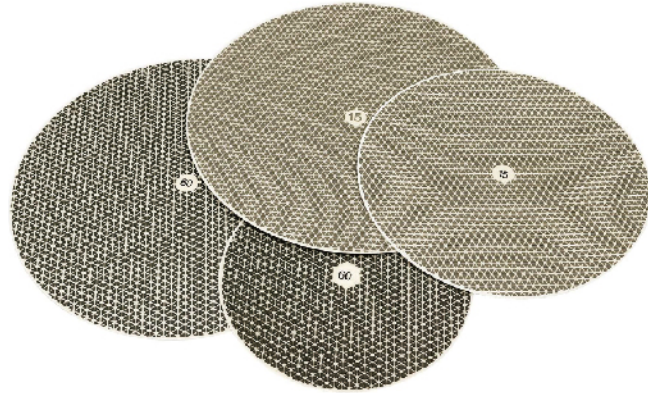
| Ø(mm) | 金刚石砂纸 Diamond Paper | | 无背胶 Non-adhesive | 背胶 Self-adhesive |
|-------|---|-----|---------------------|---------------------|
| | 颜色 Color | µm | 货号 DPNA Part No. | 货号 DPSA Part No. |
| 200 |  | 45 | 39045200 | 39045201 |
| |  | 30 | 39030200 | 39030201 |
| |  | 15 | 39015200 | 39015201 |
| |  | 9 | 39009200 | 39045201 |
| |  | 6 | 39006200 | 39045201 |
| |  | 3 | 39003200 | 39045201 |
| |  | 1 | 39001200 | 39045201 |
| |  | 0.5 | 39020005 | 39020105 |
| 250 |  | 45 | 39045250 | 39045251 |
| |  | 30 | 39030250 | 39030251 |
| |  | 15 | 39015250 | 39015251 |
| |  | 9 | 39009250 | 39045251 |
| |  | 6 | 39006250 | 39045251 |
| |  | 3 | 39003250 | 39045251 |
| |  | 1 | 39001250 | 39045251 |
| |  | 0.5 | 39025005 | 39025105 |
| 300 |  | 45 | 39045300 | 39045301 |
| |  | 30 | 39030300 | 39030301 |
| |  | 15 | 39015300 | 39015301 |
| |  | 9 | 39009300 | 39045301 |
| |  | 6 | 39006300 | 39045301 |
| |  | 3 | 39003300 | 39045301 |
| |  | 1 | 39001300 | 39045301 |
| |  | 0.5 | 39030005 | 39030105 |

Resin-bonded Diamond Disc Series HT-M/HT-H

HT-M/HT-H 树脂结合金刚石磨盘

HT-M 和 HT-H 是创新的金刚石磨盘，延伸到细磨单一微米粒度。它们取代了传统的研磨工艺，在材料磨削率、表面质量、工件几何形状和寿命方面都取得了优异的效果。HT金刚石磨盘能使各种材料的细磨到金刚石粒度 $3\mu\text{m}$ 以下，提供了一个简单、清洁和高效的精细研磨过程。

HT-M and HT-H are innovative diamond discs that extend to fine grinding of single micrometer particle sizes. They replace conventional grinding processes and provide excellent results in material grinding rate, surface quality, workpiece geometry and lifetime. HT diamond discs enable fine grinding of a variety of materials down to $3\mu\text{m}$ diamond grain size, providing a simple, clean and efficient fine grinding process.



| | |
|------|------|
| HT-M | HT-H |
|------|------|

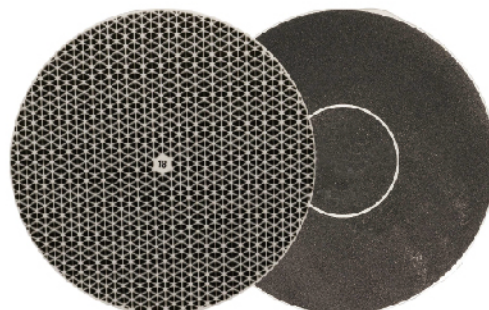
| 金刚石尺寸 Diamond Size | 直径 Diameter | 带背胶货号 Part No. Self-adhesive | 金属载体货号 Part No. Metal Carrier | 带背胶货号 Part No. Self-adhesive | 金属载体货号 Part No. Metal Carrier |
|-----------------------|----------------|---------------------------------|----------------------------------|---------------------------------|----------------------------------|
| 60 μm | 200 mm | 37334601 | 37335601 | 73344601 | 73354601 |
| | 250 mm | 37334602 | 37335602 | 73344602 | 73354602 |
| | 300 mm | 37334603 | 37335603 | 73344603 | 73354603 |
| | 350 mm | 37334604 | 37335604 | 73344604 | 73354604 |
| 30 μm | 200 mm | 37334301 | 37335301 | 73344301 | 73354301 |
| | 250 mm | 37334302 | 37335302 | 73344302 | 73354302 |
| | 300 mm | 37334303 | 37335303 | 73344303 | 73354303 |
| | 350 mm | 37334304 | 37335304 | 73344304 | 73354304 |
| 15 μm | 200 mm | 37334151 | 37335151 | 73344151 | 73354151 |
| | 250 mm | 37334152 | 37335152 | 73344152 | 73354152 |
| | 300 mm | 37334153 | 37335153 | 73344153 | 73354153 |
| | 350 mm | 37334154 | 37335154 | 73344154 | 73354154 |
| 6 μm | 200 mm | 37334061 | 37335061 | 73344061 | 73354061 |
| | 250 mm | 37334062 | 37335062 | 73344062 | 73354062 |
| | 300 mm | 37334063 | 37335063 | 73344063 | 73354063 |
| | 350 mm | 37334064 | 37335064 | 73344064 | 73354064 |
| 3 μm | 200 mm | 37334031 | 37335031 | 73344031 | 73354031 |
| | 250 mm | 37334032 | 37335032 | 73344032 | 73354032 |
| | 300 mm | 37334033 | 37335033 | 73344033 | 73354033 |
| | 350 mm | 37334034 | 37335034 | 73344034 | 73354034 |

Resin Diamond Disc Series HT-S

HT-S 树脂金刚石磨盘

HT-S是一种自锐、柔性金刚磨盘，适用于平磨和细磨，取代了传统SiC砂纸在各种材料磨削中的应用。精密级配金刚石和最佳的粒度集合，使加工时间短，表面平整，轮廓清晰度高。

HT-S is a self-sharpening, flexible carborundum disc suitable for flat and fine grinding, replacing the application of traditional SiC abrasive paper in grinding of various materials. Precision graded diamond and optimum grain size set for short processing time, flat surface and high profile definition.



去除 Removal



刃口锋利度 Edge Sharpness



使用寿命 Life



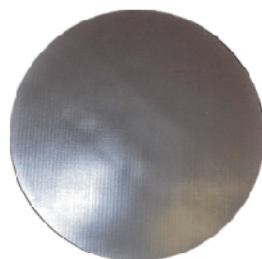
| 磨盘直径 Pad Diameter | 金刚石尺寸 Diamond Size | 带背胶货号 Part No. Adhesive Backing | 不锈钢磁性铁板货号 Part No. Stainless Steel Backing |
|----------------------|-----------------------|---------------------------------------|--|
| 200 mm | 125 μm | 38032200 | 38322001 |
| 250 mm | 125 μm | 38032210 | 38322101 |
| 300 mm | 125 μm | 38032220 | 38322201 |
| 350 mm | 125 μm | 38032230 | 38322301 |
| 200 mm | 75 μm | 38032250 | 38322501 |
| 250 mm | 75 μm | 38032260 | 38322601 |
| 300 mm | 75 μm | 38032270 | 38322701 |
| 350 mm | 75 μm | 38032280 | 38322801 |
| 200 mm | 54 μm | 38032010 | 38320101 |
| 250 mm | 54 μm | 38032110 | 38321101 |
| 300 mm | 54 μm | 38032170 | 38321701 |
| 350 mm | 54 μm | 38032190 | 38321901 |
| 200 mm | 18 μm | 38032011 | 38320111 |
| 250 mm | 18 μm | 38032111 | 38321111 |
| 300 mm | 18 μm | 38032171 | 38321711 |
| 350 mm | 18 μm | 38032191 | 38321911 |

HTMD-Magnetic Disc

转换磁盘

粘贴在抛光盘上，可实现铁盘或磁性盘产品的快速转换。

Sticking on the polishing disc can realize fast conversion of iron disc or magnetic disc.



| 型号 Type | 直径 Diameter | 包装 Pack. | 货号 Part No. |
|------------|----------------|-------------|----------------|
| HTMD | 200 | 1 pcs | 38400200 |
| | 228 | 1 pcs | 38400228 |
| | 250 | 1 pcs | 38400250 |
| | 300 | 1 pcs | 38400300 |

SAMD-Magnetic Disc

砂纸快速转换盘

粘贴在抛光盘上，可实现不同目数的砂纸快速转换。

Pasted on the polishing disc to realize fast conversion of sandpaper with different meshes.

| 型号 Type | 直径 Diameter | 包装 Pack. | 货号 Part No. |
|------------|----------------|-------------|----------------|
| SAMD | 200 | 1 pcs | 38500200 |
| | 228 | 1 pcs | 38500228 |
| | 250 | 1 pcs | 38500250 |
| | 300 | 1 pcs | 38500300 |

Diamond Grinding Disc

金刚石磨盘

电镀金刚石磨盘适用于金属，塑料，硬质合金的磨削抛光，研磨速度快，效率高，质量好，磨盘使用寿命长。这种磨盘有特殊的形状分布在表面，便于冷却水流动带走磨削抛光时所产生的热量和残留物。

Electroplated diamond grinding discs are suitable for grinding and polishing of metals, plastics and hard alloys. They have a fast grinding speed, high efficiency, good quality and longer life time. These discs have a special shape distributed on the surface, which is conducive to the flow of cooling water to remove the heat and residues generated during grinding and polishing.

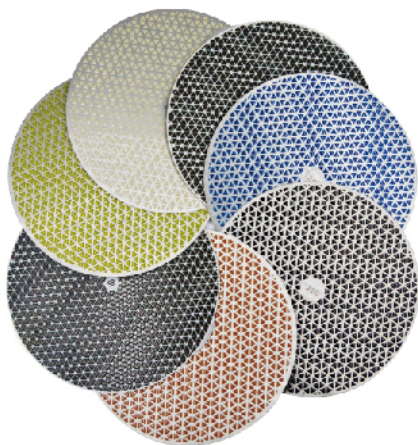
金属基金刚石磨盘是以金属为基体、金刚石颗粒为磨料的研磨工具，适用于硬质材料的高效加工。高研磨力：金属基体提供强大支撑，适合硬质材料（如金属、陶瓷、玻璃）的快速磨削。耐磨性：金刚石颗粒与金属结合剂结合，具有长寿命和高切削效率。环保性：使用水或润滑剂替代传统研磨液，减少环境污染。工业加工：金属件平面研磨、金相制样、晶片抛光等。

Metel base diamond disc is suitable for efficient processing of hard materials. High grinding force: The metal base provides strong support, making it suitable for rapid grinding of hard materials (such as metals, ceramics, and glass). Durability: The combination of diamond particles and metal binder ensures long service life and high cutting efficiency. Environmental friendliness: Using water or lubricants instead of traditional grinding fluids reduces environmental pollution. Industrial processing: Planar grinding of metal parts, metallographic sample preparation, wafer polishing, etc.



Electroplated Diamond Disc -Metal Back 背盘金刚石磨盘

| 型号 Type | 粒度 Grains (μm) | 200mm | 230mm | 250mm | 300mm |
|---------|----------------|----------|----------|----------|----------|
| XMGD | 125 | 37101220 | 37101223 | 37101225 | 37101230 |
| | 75 | 37102220 | 37102223 | 37102225 | 37102230 |
| | 30 | 37105020 | 37105023 | 37105025 | 37105030 |
| | 15 | 37112020 | 37112023 | 37112025 | 37112030 |



Matel Base Diamond Disc 背盘金刚石磨盘

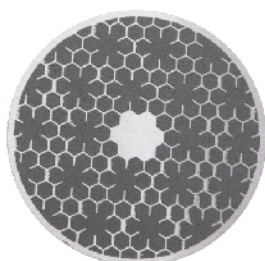
| 型号 Type | 粒度 Grains (μm) | 200mm | 250mm | 300mm |
|---------|----------------|----------|----------|----------|
| MDGD | 80 | 38000820 | 38000825 | 38000830 |
| | 120 | 38001220 | 38001225 | 38001230 |
| | 220 | 38002220 | 38002225 | 38002230 |
| | 500 | 38005020 | 38005025 | 38005030 |
| | 1000 | 38010020 | 38010025 | 38010030 |
| | 1200 | 38012020 | 38012025 | 38012030 |
| | 2000 | 38020020 | 38020025 | 38020030 |
| | 3000 | 38030020 | 38030025 | 38030030 |
| | 4000 | 38040020 | 38040025 | 38040030 |

Diamond Polishing Disc

金刚石抛盘

金刚石抛盘是一种高效、高精度的超硬磨料研磨盘，主要用于高强度钢、半导体、光学器件等材料的精密抛光。免维护，与金刚石磨料配合使用。

The diamond polishing disc is an efficient and highly precise ultra-hard abrasive grinding disc, mainly used for the precise polishing of materials such as high-strength steel, semiconductors, and optical components. It is maintenance-free and use with diamond suspension during the polishing process.



GDPD-R 金刚石抛盘 Diamond Polishing Disc

| 产品特性 Product Characteristics | 直径 Dia.(mm) | 包装 Pack.(Kg) | 货号 Part No. |
|---|-------------|--------------|-------------|
| 适合材质 >150HV, 配合 9 μ m 金刚石悬浮液使用 Materials >HV 150, using without 9 μ m diamond suspension | 200 | 1 Pcs | 38802200 |
| | 250 | 1 Pcs | 38802250 |
| | 300 | 1 Pcs | 38802300 |



GDPD-M 金刚石抛盘 Diamond Polishing Disc

| 产品特性 Product Characteristics | 直径 Dia.(mm) | 包装 Pack.(Kg) | 货号 Part No. |
|---|-------------|--------------|-------------|
| 适合材质 >40HV, 配合 9 μ m 金刚石悬浮液使用 Materials >HV 40, using without 9 μ m diamond suspension | 200 | 1 Pcs | 38801200 |
| | 250 | 1 Pcs | 38801250 |
| | 300 | 1 Pcs | 38801300 |

Grinding Stone

磨石

研磨石用于在高速自动预磨机中对试样进行预磨处理。有两种规格可供选择：氧化铝 150目 及碳化硅 80目。

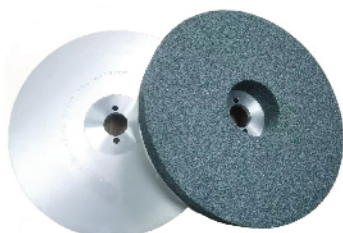
Grinding stone are used to dress samples in high speed automatic prepolishing machines.

Two types available: Al_2O_3 grain 150 and SiC grain 80.



Al_2O_3 氧化铝磨石 Grinding Stone

| 应用 Application | 润滑 Lubricate | 尺寸 Size(mm) | 货号 Part No. |
|---|--------------|-------------|-------------|
| 金属及一般应用, 250~700HV Metal and general applications, 250~700HV | 水 Water | 350x45x38 | 19310015 |



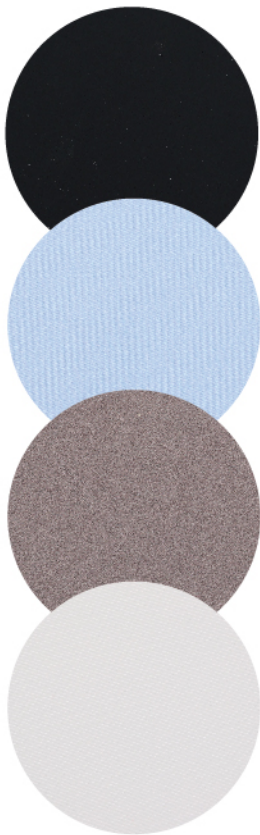
SIC 氧化铝磨石 Grinding Stone

| 应用 Application | 润滑 Lubricate | 尺寸 Size(mm) | 货号 Part No. |
|---|--------------|-------------|-------------|
| 适用所有材料 >HV200 For grinding of all materials >HV200 | 水 Water | 350x40x90 | 19100009 |

Polishing Cloth

金相抛光布

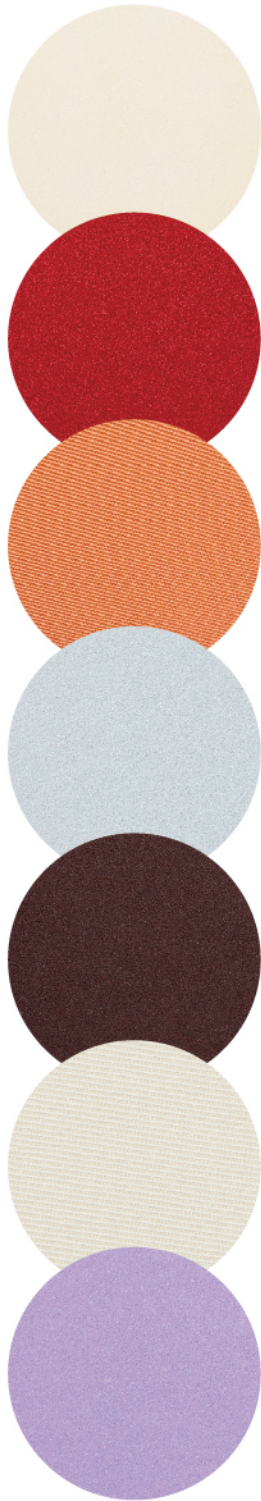
| 抛光布 Cloth Type | 特性 Characteristics | 使用推荐 Recommended Use | 磨料范围 Abrasive Range |
|-------------------|--|---|------------------------|
| HT-Plan | 平织涤纶 Coated, woven polyester | 软金属精细研磨, 硬金属粗抛 Fine grinding of soft metals, Pre-polishing of hard materials | 15-3 μm |
| HT-Pan | 浸渍的, 非织物 Impregnated, non-woven technical textile | 软金属精细研磨, 硬和脆金属粗抛 Fine grinding of soft metals, Pre-polishing of hard and brittle materials | 15-1 μm |
| HT-Sat | 醋酸编织物 Woven acetate | 黑色金属的精磨, 有色金属、涂料和塑料抛光 Fine grinding and polishing of ferrous metals, non-ferrous metals, coatings and plastics | 9-1 μm |
| HT-Dur | 天然丝 Satin woven natural silk | | 9-1 μm |
| HT-Dac | 丝绸 Satin woven acetate | 所有材料抛光 Polishing of all materials | 9-3 μm |
| HT-Mol | 羊毛 Taffeta woven 100% wool | 黑色及有色金属及聚合物的抛光 Polishing of ferrous and non-ferrous metals and polymers | ≤3 μm |
| HT-Plus | 合成绒 Synthetic nap | 用于烧结硬质合金和钢的一步抛光 One step polishing for sintered carbides and steels | ≤3 μm |
| HT-Floc | | 所有材料抛光 Polishing of all materials | ≤3 μm |
| HT-Nap | 合成短绒 Synthetic short nap | 所有材料终抛 Final polishing of all materials | ≤1 μm |
| HT-ALPS | | | ≤1 μm |
| HT-Final B | | | ≤1 μm |
| HT-Final C | | | ≤1 μm |
| HT-UVPC | | | ≤1 μm |
| HT-Micro | | | ≤1 μm |
| HT-SPEC | | | ≤1 μm |
| HT-Chem | | | 多孔氯丁橡胶 Porous neoprene |



| CHEM Cloth Dia.(mm) | HT-CHEM 背胶 10 Pcs | HD-CHEM 背盘 5 Pcs | HM-CHEM 背磁 5 Pcs |
|------------------------|----------------------|---------------------|---------------------|
| 203 | 50010203 | 51010203 | 52010203 |
| 228 | 50010228 | 51010228 | 52010228 |
| 254 | 50010254 | 51010254 | 52010254 |
| 305 | 50010305 | 51010305 | 52010305 |
| BDAC Cloth Dia.(mm) | HT-BDAC 背胶 10 Pcs | HD-BDAC 背盘 5 Pcs | HM-BDAC 背磁 5 Pcs |
| 203 | 50011203 | 51011203 | 52011203 |
| 228 | 50011228 | 51011228 | 52011228 |
| 254 | 50011254 | 51011254 | 52011254 |
| 305 | 50011305 | 51011305 | 52011305 |
| Floc Cloth Dia.(mm) | HT-Floc 背胶 10 Pcs | HD-Floc 背盘 5 Pcs | HM-Floc 背磁 5 Pcs |
| 203 | 50012203 | 51012203 | 52012203 |
| 228 | 50012228 | 51012228 | 52012228 |
| 254 | 50012254 | 51012254 | 52012254 |
| 305 | 50012305 | 51012305 | 52012305 |
| Plan Cloth Dia.(mm) | HT-Plan 背胶 10 Pcs | HD-Plan 背盘 5 Pcs | HM-Plan 背磁 5 Pcs |
| 203 | 50013203 | 51013203 | 52013203 |
| 228 | 50013228 | 51013228 | 52013228 |
| 254 | 50013254 | 51013254 | 52013254 |
| 305 | 50013305 | 51013305 | 52013305 |

Polishing Cloth

金相抛光布



| | | | |
|-------------------------------|-----------------------------|----------------------------|----------------------------|
| PAN Cloth Dia.(mm) | HT-PAN 背胶 10 Pcs | HD-PAN 背盘 5 Pcs | HM-PAN 背磁 5 Pcs |
| 203 | 50014203 | 51014203 | 52014203 |
| 228 | 50014228 | 51014228 | 52014228 |
| 254 | 50014254 | 51014254 | 52014254 |
| 305 | 50014305 | 51014305 | 52014305 |
| NAT Cloth Dia.(mm) | HT-NAT 背胶 10 Pcs | HD-NAT 背盘 5 Pcs | HM-NAT 背磁 5 Pcs |
| 203 | 50015203 | 51015203 | 52015203 |
| 228 | 50015228 | 51015228 | 52015228 |
| 254 | 50015254 | 51015254 | 52015254 |
| 305 | 50015305 | 51015305 | 52015305 |
| SAT Cloth Dia.(mm) | HT-SAT 背胶 10 Pcs | HD-SAT 背盘 5 Pcs | HM-SAT 背磁 5 Pcs |
| 203 | 50016203 | 51016203 | 52016203 |
| 228 | 50016228 | 51016228 | 52016228 |
| 254 | 50016254 | 51016254 | 52016254 |
| 305 | 50016305 | 51016305 | 52016305 |
| Plus Cloth Dia.(mm) | HT-Plus 背胶 10 Pcs | HD-Plus 背盘 5 Pcs | HM-Plus 背磁 5 Pcs |
| 203 | 50017203 | 51017203 | 52017203 |
| 228 | 50017228 | 51017228 | 52017228 |
| 254 | 50017254 | 51017254 | 52017254 |
| 305 | 50017305 | 51017305 | 52017305 |
| NAP Cloth Dia.(mm) | HT-NAP 背胶 10 Pcs | HD-NAP 背盘 5 Pcs | HM-NAP 背磁 5 Pcs |
| 203 | 50018203 | 51018203 | 52018203 |
| 228 | 50018228 | 51018228 | 52018228 |
| 254 | 50018254 | 51018254 | 52018254 |
| 305 | 50018305 | 51018305 | 52018305 |
| Umol Cloth Dia.(mm) | HT-Umol 背胶 10 Pcs | HD-Umol 背盘 5 Pcs | HM-Umol 背磁 5 Pcs |
| 203 | 50019203 | 51019203 | 52019203 |
| 228 | 50019228 | 51019228 | 52019228 |
| 254 | 50019254 | 51019254 | 52019254 |
| 305 | 50019305 | 51019305 | 52019305 |
| UVPC Cloth Dia.(mm) | HT-UVPC 背胶 10 Pcs | HD-UVPC 背盘 5 Pcs | HM-UVPC 背磁 5 Pcs |
| 203 | 50020203 | 51020203 | 52020203 |
| 228 | 50020228 | 51020228 | 52020228 |
| 254 | 50020254 | 51020254 | 52020254 |
| 305 | 50020305 | 51020305 | 52020305 |

Polishing Cloth

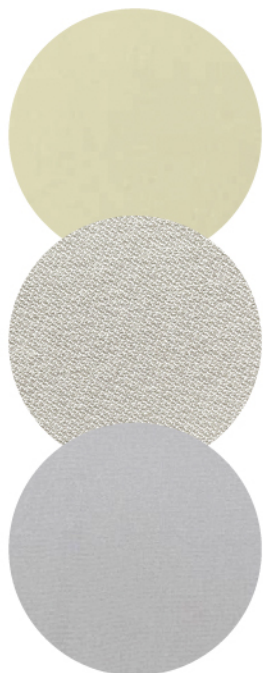
金相抛光布



| DUR Cloth Dia.(mm) | HT-DUR 背胶 10 Pcs | HD-DUR 背盘 5 Pcs | HM-DUR 背磁 5 Pcs |
|---------------------------|-------------------------|------------------------|------------------------|
| 203 | 50021203 | 51021203 | 52021203 |
| 228 | 50021228 | 51021228 | 52021228 |
| 254 | 50021254 | 51021254 | 52021254 |
| 305 | 50021305 | 51021305 | 52021305 |
| Micro Cloth Dia.(mm) | HT-Micro 背胶 10 Pcs | HD-Micro 背盘 5 Pcs | HM-Micro 背磁 5 Pcs |
| 203 | 50022203 | 51022203 | 52022203 |
| 228 | 50022228 | 51022228 | 52022228 |
| 254 | 50022254 | 51022254 | 52022254 |
| 305 | 50022305 | 51022305 | 52022305 |
| GDAC Cloth Dia.(mm) | HT-GDAC 背胶 10 Pcs | HD-GDAC 背盘 5 Pcs | HM-GDAC 背磁 5 Pcs |
| 203 | 50023203 | 51023203 | 52023203 |
| 228 | 50023228 | 51023228 | 52023228 |
| 254 | 50023254 | 51023254 | 52023254 |
| 305 | 50023305 | 51023305 | 52023305 |
| Final B Cloth Dia.(mm) | HT-Final B 背胶 10 Pcs | HD-Final B 背盘 5 Pcs | HM-Final B 背磁 5 Pcs |
| 203 | 50024203 | 51024203 | 52024203 |
| 228 | 50024228 | 51024228 | 52024228 |
| 254 | 50024254 | 51024254 | 52024254 |
| 305 | 50024305 | 51024305 | 52024305 |
| SPEC Cloth Dia.(mm) | HT-SPEC 背胶 10 Pcs | HD-SPEC 背盘 5 Pcs | HM-SPEC 背磁 5 Pcs |
| 203 | 50025203 | 51025203 | 52025203 |
| 228 | 50025228 | 51025228 | 52025228 |
| 254 | 50025254 | 51025254 | 52025254 |
| 305 | 50025305 | 51025305 | 52025305 |
| ALPS Cloth Dia.(mm) | HT-ALPS 背胶 10 Pcs | HD-ALPS 背盘 5 Pcs | HM-ALPS 背磁 5 Pcs |
| 203 | 50026203 | 51026203 | 52026203 |
| 228 | 50026228 | 51026228 | 52026228 |
| 254 | 50026254 | 51026254 | 52026254 |
| 305 | 50026305 | 51026305 | 52026305 |
| WDAC Cloth Dia.(mm) | HT-WDAC 背胶 10 Pcs | HD-WDAC 背盘 5 Pcs | HM-WDAC 背磁 5 Pcs |
| 203 | 50027203 | 51027203 | 52027203 |
| 228 | 50027228 | 51027228 | 52027228 |
| 254 | 50027254 | 51027254 | 52027254 |
| 305 | 50027305 | 51027305 | 52027305 |

Polishing Cloth

金相抛光布



| Final C Cloth Dia.(mm) | HT-Final C 背胶 10 Pcs | HD-Final C 背盘 5 Pcs | HM-Final C 背磁 5 Pcs |
|---------------------------|-------------------------|------------------------|------------------------|
| 203 | 50028203 | 51028203 | 52028203 |
| 228 | 50028228 | 51028228 | 52028228 |
| 254 | 50028254 | 51028254 | 52028254 |
| 305 | 50028305 | 51028305 | 52028305 |
| Emol Cloth Dia.(mm) | HT-Emol 背胶 10 Pcs | HD-Emol 背盘 5 Pcs | HM-Emol 背磁 5 Pcs |
| 203 | 50029200 | 51029200 | 52029200 |
| 228 | 50029228 | 51029228 | 52029228 |
| 254 | 50029250 | 51029250 | 52029250 |
| 305 | 50029300 | 51029300 | 52029300 |
| TDAC Cloth Dia.(mm) | HT-TDAC 背胶 10 Pcs | HD-TDAC 背盘 5 Pcs | HM-TDAC 背磁 5 Pcs |
| 203 | 50032203 | 51032203 | 52032203 |
| 228 | 50032228 | 51032228 | 52032228 |
| 254 | 50032254 | 51032254 | 52032254 |
| 305 | 50032305 | 51032305 | 52032305 |

Polishing Cloth (Local)

国产金相抛光布

| 抛光布 Cloth Type | 特性 Characteristics | 使用推荐 Recommended Use | 磨料范围 Abrasive Range |
|-------------------|----------------------------|---|------------------------|
| HT-NLPC | 尼龙织物 Nylon fabric | 软金属精细研磨, 硬金属粗抛 Fine grinding of soft metals, Pre-polishing of hard materials | 15-3 μm |
| HT-SCPC | 丝绸, 灰色 Satin woven acetate | 所有材料抛光 Polishing of all materials | 9-3 μm |
| HT-LMol | 羊毛 Taffeta woven 100% wool | 黑色及有色金属及聚合物的抛光 Polishing of ferrous and non-ferrous metals and polymers | ≤3 μm |
| HT-FBPC | 棉织物 Baffeta | 用于硬质合金和钢的抛光 Polishing for carbides and hard material | 9-3 μm |
| HT-NRPC | 呢绒织物 Woollen fabric | 所有材料抛光 Polishing of all materials | 9-3 μm |
| HT-SRPC | 丝绒织物 Velvet | 软质材料抛光 Polishing of soft materials | 3-1 μm |
| HT-ZRPC | 植绒 Flocking nap | 所有材料抛光 Polishing of all materials | 3-0.5 μm |
| HT-ZNPC | 多孔氯丁橡胶 Porous neoprene | 所有材料终抛 Final polishing of all materials | 1-0.05 μm |

Polishing Cloth (Local)

国产金相抛光布



| | | | |
|-------------------------------|-----------------------------|----------------------------|----------------------------|
| SRPC Cloth Dia.(mm) | HT-SRPC 背胶 10 Pcs | HD-SRPC 背盘 5 Pcs | HM-SRPC 背磁 5 Pcs |
| 200 | 53010200 | 54010200 | 55010200 |
| 228 | 53010228 | 54010228 | 55010228 |
| 250 | 53010250 | 54010250 | 55010250 |
| 300 | 53010300 | 54010300 | 55010300 |
| ZRPC Cloth Dia.(mm) | HT-ZRPC 背胶 10 Pcs | HD-ZRPC 背盘 5 Pcs | HM-ZRPC 背磁 5 Pcs |
| 200 | 53011200 | 54011200 | 55011200 |
| 228 | 53011228 | 54011228 | 55011228 |
| 250 | 53011250 | 54011250 | 55011250 |
| 300 | 53011300 | 54011300 | 55011300 |
| SCPC Cloth Dia.(mm) | HT-SCPC 背胶 10 Pcs | HD-SCPC 背盘 5 Pcs | HM-SCPC 背磁 5 Pcs |
| 200 | 53012200 | 54012200 | 55012200 |
| 228 | 53012228 | 54012228 | 55012228 |
| 250 | 53012250 | 54012250 | 55012250 |
| 300 | 53012300 | 54012300 | 55012300 |
| NRPC Cloth Dia.(mm) | HT-NRPC 背胶 10 Pcs | HD-NRPC 背盘 5 Pcs | HM-NRPC 背磁 5 Pcs |
| 200 | 53013200 | 54013200 | 55013200 |
| 228 | 53013228 | 54013228 | 55013228 |
| 250 | 53013250 | 54013250 | 55013250 |
| 300 | 53013300 | 54013300 | 55013300 |
| NLPC Cloth Dia.(mm) | HT-NLPC 背胶 10 Pcs | HD-NLPC 背盘 5 Pcs | HM-NLPC 背磁 5 Pcs |
| 200 | 53014200 | 54014200 | 55014200 |
| 228 | 53014228 | 54014228 | 55014228 |
| 250 | 53014250 | 54014250 | 55014250 |
| 300 | 53014300 | 54014300 | 55014300 |
| FBPC Cloth Dia.(mm) | HT-FBPC 背胶 10 Pcs | HD-FBPC 背盘 5 Pcs | HM-FBPC 背磁 5 Pcs |
| 200 | 53015200 | 54015200 | 55015200 |
| 228 | 53015228 | 54015228 | 55015228 |
| 250 | 53015250 | 54015250 | 55015250 |
| 300 | 53015300 | 54015300 | 55015300 |
| ZNPC Cloth Dia.(mm) | HT-ZNPC 背胶 10 Pcs | HD-ZNPC 背盘 5 Pcs | HM-ZNPC 背磁 5 Pcs |
| 200 | 53016200 | 54016200 | 55016200 |
| 228 | 53016228 | 54016228 | 55016228 |
| 250 | 53016250 | 54016250 | 55016250 |
| 300 | 53016300 | 54016300 | 55016300 |
| LMol Cloth Dia.(mm) | HT-LMol 背胶 10 Pcs | HD-LMol 背盘 5 Pcs | HM-LMol 背磁 5 Pcs |
| 200 | 53017200 | 54017200 | 55017200 |
| 228 | 53017228 | 54017228 | 55017228 |
| 250 | 53017250 | 54017250 | 55017250 |
| 300 | 53017300 | 54017300 | 55017300 |
| YMPC Cloth Dia.(mm) | HT-YMPC 背胶 10 Pcs | HD-YMPC 背盘 5 Pcs | HM-YMPC 背磁 5 Pcs |
| 200 | 53018200 | 54018200 | 55018200 |
| 228 | 53018228 | 54018228 | 55018228 |
| 250 | 53018250 | 54018250 | 55018250 |
| 300 | 53018300 | 54018300 | 55018300 |

Diamond Suspension

金刚石悬浮液

“二合一”金刚石悬浮液无需再加任何额外润滑剂即可使用，这使得其性能始终稳定、可重复，同时还能显著降低磨料消耗。这确保了每次喷洒在抛光布上的金刚石数量始终一样，并且避免在额外添加润滑剂的过程中造成悬浮液被稀释。

All-in-One” diamond suspensions are used without any additional lubricant, which results in a consistent, reproducible quality at all times and a significant savings in consumption. This ensures that the same number of diamonds is always sprayed on the cloth and partial dilution of the suspension is avoided during add lubricate.



进口二合一单晶悬浮液 Import 2 In1 Monocrystalline Diamond Suspension

| 型号 Type | 粒度 Grains (μm) | 250ml | 500ml | 1L | 2.5L | 5L |
|---------|----------------|----------|----------|----------|----------|----------|
| DSMI | 0.25 | 40400251 | 40400252 | 40400253 | 40400254 | 40400255 |
| | 0.5 | 40400501 | 40400502 | 40400503 | 40400504 | 40400505 |
| | 1 | 40401001 | 40401002 | 40401003 | 40401004 | 40401005 |
| | 3 | 40403001 | 40403002 | 40403003 | 40403004 | 40403005 |
| | 6 | 40406001 | 40406002 | 40406003 | 40406004 | 40406005 |
| | 9 | 40409001 | 40409002 | 40409003 | 40409004 | 40409005 |
| | 15 | 40415001 | 40415002 | 40415003 | 40415004 | 40415005 |



进口二合一多晶悬浮液 Import 2 In1 Polycrystalline Diamond Suspension

| 型号 Type | 粒度 Grains (μm) | 250ml | 500ml | 1L | 2.5L | 5L |
|---------|----------------|----------|----------|----------|----------|----------|
| DSPI | 0.25 | 41400251 | 41400252 | 41400253 | 41400254 | 41400255 |
| | 0.5 | 41400501 | 41400502 | 41400503 | 41400504 | 41400505 |
| | 1 | 41401001 | 41401002 | 41401003 | 41401004 | 41401005 |
| | 3 | 41403001 | 41403002 | 41403003 | 41403004 | 41403005 |
| | 6 | 41406001 | 41406002 | 41406003 | 41406004 | 41406005 |
| | 9 | 41409001 | 41409002 | 41409003 | 41409004 | 41409005 |
| | 15 | 41415001 | 41415002 | 41415003 | 41415004 | 41415005 |



二合一单晶悬浮液 2 In1 Monocrystalline Diamond Suspension

| 型号 Type | 粒度 Grains (μm) | 250ml | 500ml | 1L | 2.5L | 5L |
|---------|----------------|----------|----------|----------|----------|----------|
| DMWL | 0.25 | 40200251 | 40200252 | 40200253 | 40200254 | 40200255 |
| | 0.5 | 40200501 | 40200502 | 40200503 | 40200504 | 40200505 |
| | 1 | 40201001 | 40201002 | 40201003 | 40201004 | 40201005 |
| | 3 | 40203001 | 40203002 | 40203003 | 40203004 | 40203005 |
| | 6 | 40206001 | 40206002 | 40206003 | 40206004 | 40206005 |
| | 9 | 40209001 | 40209002 | 40209003 | 40209004 | 40209005 |
| | 15 | 40215001 | 40215002 | 40215003 | 40215004 | 40215005 |



二合一多晶悬浮液 2 In1 Polycrystalline Diamond Suspension

| 型号 Type | 粒度 Grains (μm) | 250ml | 500ml | 1L | 2.5L | 5L |
|---------|----------------|----------|----------|----------|----------|----------|
| DPWL | 0.25 | 41200251 | 41200252 | 41200253 | 41200254 | 41200255 |
| | 0.5 | 41200501 | 41200502 | 41200503 | 41200504 | 41200505 |
| | 1 | 41201001 | 41201002 | 41201003 | 41201004 | 41201005 |
| | 3 | 41203001 | 41203002 | 41203003 | 41203004 | 41203005 |
| | 6 | 41206001 | 41206002 | 41206003 | 41206004 | 41206005 |
| | 9 | 41209001 | 41209002 | 41209003 | 41209004 | 41209005 |
| | 15 | 41215001 | 41215002 | 41215003 | 41215004 | 41215005 |

Polishing Lubricants

抛光润滑液 配合金刚石悬浮液使用 Using With Diamond Suspension

红色润滑剂(油基型)是一种油水混合物,由于其较高的黏度,能够在抛光布上形成均匀且稳定的润滑层。适用于热敏性和水敏性材料。

Lubricant red (oil based) is an oil - water emulsion and due to its higher viscosity ensures a consistently, stable lubricating film on the polishing cloth. Optimal for heat as well as water sensitive materials.



| 特性 Characteristics | 颜色 Color | 包装 Pack. | 货号 Part No. |
|---|----------|----------|-------------|
| 油基无水 Oil base for water-free preparation | 红 Red | 1L | 48100001 |
| | | 2.5L | 48100002 |
| | | 5L | 48100003 |
| | | 10L | 48100004 |
| | | 5L | 48100005 |

润滑剂“黄色(水基型)”特别环保,并能在抛光布上形成均匀的润滑层。

Lubricant yellow (water-based) is especially environmentally friendly and provides an even lubricating film on the polishing cloth.



| 特性 Characteristics | 颜色 Color | 包装 Pack. | 货号 Part No. |
|--|----------|----------|-------------|
| 水基环保 Water base and ecologically friendly | 黄 Yellow | 1L | 48100001 |
| | | 2.5L | 48100002 |
| | | 5L | 48100003 |
| | | 10L | 48100004 |
| | | 5L | 48100005 |

润滑剂蓝色(酒精型)的黏度和表面张力更高。因此,这种润滑剂能在抛光布上停留更长时间。这使得磨料用量能够更加节省。

lubricant blue (alcohol-based) has a high viscosity and surface tension. Due to this, the lubricant remains longer on the polishing cloth. This allows a more economical abrasive dosage.



| 特性 Characteristics | 颜色 Color | 包装 Pack. | 货号 Part No. |
|---|----------|----------|-------------|
| 酒精基 Alcohol-based for water-free preparation | 蓝 Blue | 1L | 48100001 |
| | | 2.5L | 48100002 |
| | | 5L | 48100003 |
| | | 10L | 48100004 |
| | | 5L | 48100005 |

Diamond Polishing Pastes

金刚石抛光膏

研磨膏中所含的金刚石粉末纯净无杂质，确保了其磨削力。膏体的浓度对抛光的成效速度有着直接影响：浓度高则意味着效率高。

Pastes contain a diamond powder free of any impurity, guaranteeing its cutting power. The concentration of the pastes has a direct effect on the polishing's execution rate: a high concentration is the guarantee of a high yield.



| 特性 Characteristics | 型号 Type | 粒度 Grains (μm) | 包装 Pack. | 货号 Part No. |
|--|---------|----------------|----------|-------------|
| 5 克装, 单晶金刚石研磨膏适用于所有材料, 使用水或酒精清理 5 g., Monocrystalline diamond for all materials, Cleaning with water or alcohol | DMOP | 0.25 | 5g | 69200501 |
| | | 0.5 | 5g | 69200502 |
| | | 1 | 5g | 69200503 |
| | | 3 | 5g | 69200504 |
| | | 6 | 5g | 69200505 |
| | | 9 | 5g | 69200506 |
| 5 克装, 多晶金刚石研磨膏适用于所有材料, 使用水或酒精清理 5 g., Polycrystalline diamond for all materials, Cleaning with water or alcohol | DPOP | 0.25 | 5g | 69210501 |
| | | 0.5 | 5g | 69210502 |
| | | 1 | 5g | 69210503 |
| | | 3 | 5g | 69210504 |
| | | 6 | 5g | 69210505 |
| | | 9 | 5g | 69210506 |
| | | 15 | 5g | 69210507 |

Diamond Spray

金刚石抛光剂



| 特性 Characteristics | 型号 Type | 粒度 Grains (μm) | 包装 Pack. | 货号 Part No. |
|---|---------|----------------|----------|-------------|
| 350ml 装, 金刚石颗粒均匀, 喷雾气味小, 金刚石含量高, 磨削力高! 成本低, 经济型 350ml. The diamond particles are uniform and the spray has a mild odor. High diamond content, high polishing power. Low cost, economical | ABDS | 0.5 | 350ml | 49000050 |
| | | 1 | 350ml | 49000100 |
| | | 2.5 | 350ml | 49000250 |
| | | 3.5 | 350ml | 49000350 |
| | | 5 | 350ml | 49000500 |
| | | 7 | 350ml | 49000700 |
| | | 15 | 350ml | 49001500 |

Alumina Powder

抛光氧化铝粉



| 特性 Characteristics | 型号 Type | 粒度 Grains (μm) | 包装 Pack. | 货号 Part No. |
|---|---------|----------------|----------|-------------|
| 球状氧化铝的去除率高于相同尺寸的其他类型的氧化铝,提供 3, 1, 0.3 & 0.05 微米 4 种粒径规格可选 Agglomerated alumina offers higher removal rates than other aluminas of the same size, Available in 3, 1, 0.3, & 0.05 μm particle sizes. | APIT | 0.05 | 1 lb | 45000051 |
| | | 0.05 | 20kg | 45000052 |
| | | 0.3 | 1 lb | 45000301 |
| | | 0.3 | 20kg | 45000302 |
| | | 1 | 1 lb | 45001001 |
| | | 1 | 20kg | 45001002 |
| | | 3 | 1 lb | 45003001 |
| | | 3 | 20kg | 45030002 |

Alumina Suspension (Import)

进口氧化铝悬浮液

溶胶-凝胶法制备的氧化铝悬浮液 (粒径 0.05 微米, pH 值约 8.5) 适用于矿物质、金属、碳化物、贵金属、电路板电子元件以及聚合物等材料。

Sol-gel alumina suspension (0.05 μm, ~8.5 pH) is excellent for minerals, ferrous metals, carbides, precious metals, PWB's electronics and polymers.



| 型号 Type | 粒度 Grains (μm) | 250ml | 1.9L | 3.8L | 1L | 5L |
|---------|----------------|----------|----------|----------|----------|----------|
| SGAS | 0.05 | 45100051 | 45100052 | 45100053 | 45100054 | 45100055 |
| SGAS | 0.3 | 45100301 | 45100302 | 45100303 | 45100304 | 45100305 |
| ASPI | 0.05 | 44056601 | 44056602 | 44056603 | 44056604 | 44056607 |
| ASPI | 0.3 | 44003001 | 44003002 | 44003003 | 44003004 | 44003005 |

Silica Suspension (Import)

进口二氧化硅悬浮液

非结晶胶体二氧化硅悬浮液 (粒径 0.05 微米, pH 值约 10), 具有化学机械抛光效果, 特别适用于难熔金属、矿物和陶瓷材料。

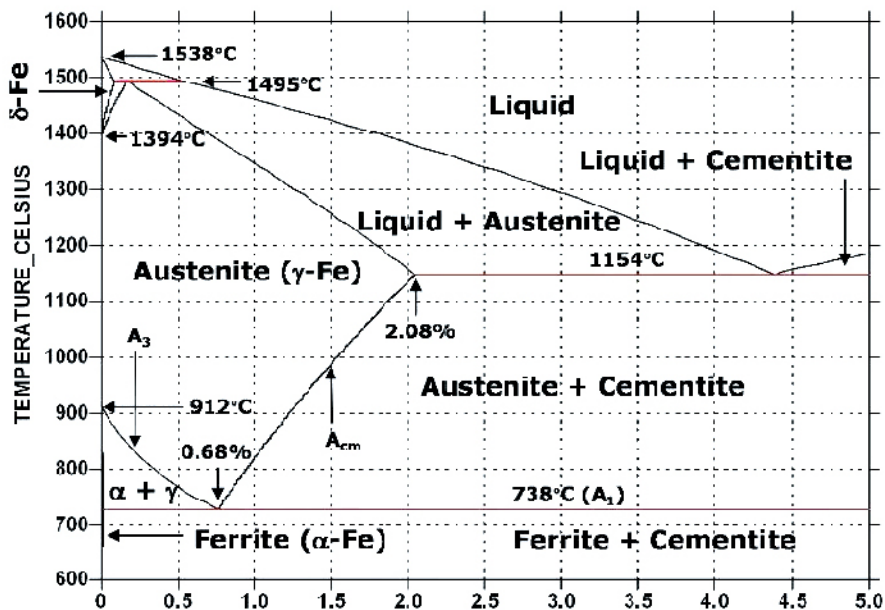
ACSS Amorphous colloidal silica suspension (0.05 μm, ~10 pH) that provides chemo mechanical polishing and is excellent for refractory metals, minerals and ceramics.

非结晶态胶状二氧化硅悬浮液 (0.05 微米, pH 值约 10.5), 具有化学机械抛光作用, 特别适用于难熔金属、矿物和陶瓷材料。

HOPS Non-crystallizing amorphous colloidal silica suspension (0.05 μm, ~10.5 pH) that provides chemo-mechanical polishing action and is excellent for refractory metals, minerals and ceramics.



| 型号 Type | 粒度 Grains (μm) | 250ml | 1.9L | 3.8L | 1L | 5L |
|---|----------------|----------|----------|----------|----------|----------|
| ACSS | 0.05 | 43405901 | 43405902 | 43405904 | 43405903 | 43405905 |
| HOPS | 0.05 | 44000501 | 44000502 | 44000503 | 44000504 | 44000505 |
| 蓝色二氧化硅悬浮液 ACSS-Bule colloidal silica suspension | | | | | | |
| 非结晶二氧化硅悬浮液 HOPS-Non-crystallizing silica suspension | | | | | | |



HTMET[®]
Ideas For Metallography

无锡海特泰克科技有限公司
 Wuxi HT Technology Co., Ltd.

ADD 江苏省无锡市新吴区锡泰路566号云智科技园4号701
 No.566, Xitai Rd. building U4-701, Xinwu district, 214112, Wuxi, P.R.China.

WEB www.tech-ht.com E-MAIL sales@tech-ht.com

TEL +86 (510)8855 1116
 +86 181 5153 9767